

6 Roll Tap Series

Overall length	Thread length	Tread + Neck length	Shank length	Shank dia.	Size of square	Length of square
L	ℓ	ℓn	ℓs	Ds	K	ℓk

Overall length	Thread length	Tread + Neck length	Shank length	Shank dia.	Size of square	Length of square
L	ℓ	ℓn	ℓs	Ds	K	ℓk

JIS

① Spiral Fluted Taps (for blind hole)

② Spiral Fluted Taps (for through hole)

③ Spiral Pointed Taps (for through hole)

④ Hand Taps

⑤ Cemented Carbide Taps

⑥ Roll Taps

⑦ Special Thread Taps (Single Inspection Tools)

⑧ Pipe Taps

⑨ Thread Mills

⑩ Dies

⑪ Center Drills Centering Tools

JIS

N+RZ/N-RZ

Thread Forming Taps for Steels



Specification



■N+RZ/N-RZ are the forming taps suitable for ferrous materials such as carbon steels, alloy steels, and normal steels.

Recommended Tapping Speeds depending on Materials

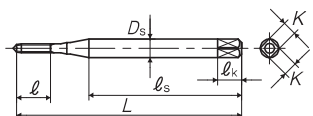
Low carbon steels 低炭素鋼	Medium carbon steels 中炭素鋼
5~15 (m/min)	5~15 (m/min)

Product symbol is distinguished depend on the size.

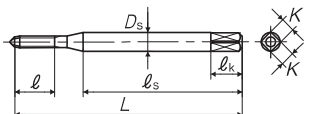
N+RZ	~M6 (coarse thread)
N-RZ	~M6 (fine threads), M7~, all U, all STI

For icon explanation, refer to icon-1

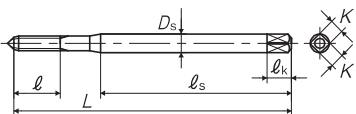
TYPE: 1



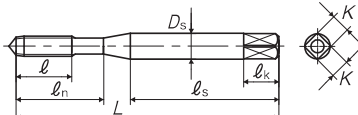
TYPE: 2



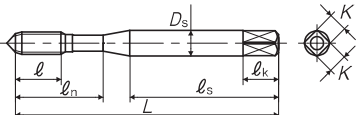
TYPE: 3



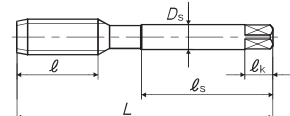
TYPE: 4



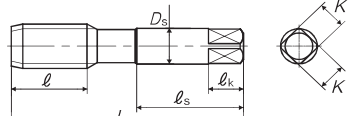
TYPE: 5



TYPE: 6



TYPE: 7



Number of oil grooves : Metric thread : M2.6 and smaller=non, M3~M7=4, M8=3, M10 and larger=4

Recommended class

Segment : 1J

Size	Class	Code	Chamfer	L (mm)	ℓ (mm)	ℓn (mm)	ℓs (mm)	Ds (mm)	K (mm)	ℓk (mm)	Lobe	TYPE	MSRP
For Metric Threads													
M1 × 0.25	G4	NRZP41.0BP	4P	36	4.5	-	24	3	2.5	5	4	1	¥ 3,380
M1 × 0.25	G4	NRZP41.0BB	2P	36	4.5	-	24	3	2.5	5	4	1	¥ 3,380
M1 × 0.25	G5	NRZP51.0BP	4P	36	4.5	-	24	3	2.5	5	4	1	¥ 3,380*
M1 × 0.25	G5	NRZP51.0BB	2P	36	4.5	-	24	3	2.5	5	4	1	¥ 3,380*
M1.2 × 0.25	G4	NRZP41.2BP	4P	36	4.5	-	24	3	2.5	5	4	1	¥ 3,380
M1.2 × 0.25	G4	NRZP41.2BB	2P	36	4.5	-	24	3	2.5	5	4	1	¥ 3,380
M1.2 × 0.25	G5	NRZP51.2BP	4P	36	4.5	-	24	3	2.5	5	4	1	¥ 3,380*
M1.2 × 0.25	G5	NRZP51.2BB	2P	36	4.5	-	24	3	2.5	5	4	1	¥ 3,380*
M1.4 × 0.3	G4	NRZP41.4CP	4P	36	5.4	-	24	3	2.5	5	4	1	¥ 2,760
M1.4 × 0.3	G4	NRZP41.4CB	2P	36	5.4	-	24	3	2.5	5	4	1	¥ 2,760
M1.4 × 0.3	G5	NRZP51.4CP	4P	36	5.4	-	24	3	2.5	5	4	1	¥ 2,760
M1.4 × 0.3	G5	NRZP51.4CB	2P	36	5.4	-	24	3	2.5	5	4	1	¥ 2,760
M1.6 × 0.35	G4	NRZP41.6DP	4P	36	6.3	-	24	3	2.5	5	4	2	¥ 2,640
M1.6 × 0.35	G4	NRZP41.6DB	2P	36	6.3	-	24	3	2.5	5	4	2	¥ 2,640
M1.6 × 0.35	G5	NRZP51.6DP	4P	36	6.3	-	24	3	2.5	5	4	2	¥ 2,640
M1.6 × 0.35	G5	NRZP51.6DB	2P	36	6.3	-	24	3	2.5	5	4	2	¥ 2,640
M1.7 × 0.35	G4	NRZP41.7DP	4P	36	6.3	-	24	3	2.5	5	4	2	¥ 2,640
M1.7 × 0.35	G4	NRZP41.7DB	2P	36	6.3	-	24	3	2.5	5	4	2	¥ 2,640
M1.7 × 0.35	G5	NRZP51.7DP	4P	36	6.3	-	24	3	2.5	5	4	2	¥ 2,640
M1.7 × 0.35	G5	NRZP51.7DB	2P	36	6.3	-	24	3	2.5	5	4	2	¥ 2,640
M1.7 × 0.35	G6	NRZP61.7DP	4P	36	6.3	-	24	3	2.5	5	4	2	¥ 2,640
M1.7 × 0.35	G6	NRZP61.7DB	2P	36	6.3	-	24	3	2.5	5	4	2	¥ 2,640
M1.8 × 0.35	G4	NRZP41.8DP	4P	42	6.3	-	27	3	2.5	5	4	2	¥ 2,640*
M1.8 × 0.35	G4	NRZP41.8DB	2P	42	6.3	-	27	3	2.5	5	4	2	¥ 2,640*
M1.8 × 0.35	G5	NRZP51.8DP	4P	42	6.3	-	27	3	2.5	5	4	2	¥ 2,640*
M1.8 × 0.35	G5	NRZP51.8DB	2P	42	6.3	-	27	3	2.5	5	4	2	¥ 2,640*
M2 × 0.4	G4	NRZP42.0EP	4P	42	7.2	-	27	3	2.5	5	4	3	¥ 2,140
M2 × 0.4	G4	NRZP42.0EB	2P	42	7.2	-	27	3	2.5	5	4	3	¥ 2,140
M2 × 0.4	G5	NRZP52.0EP	4P	42	7.2	-	27	3	2.5	5	4	3	¥ 2,140
M2 × 0.4	G5	NRZP52.0EB	2P	42	7.2	-	27	3	2.5	5	4	3	¥ 2,140
M2 × 0.4	G6	NRZP62.0EP	4P	42	7.2	-	27	3	2.5	5	4	3	¥ 2,140
M2 × 0.4	G6	NRZP62.0EB	2P	42	7.2	-	27	3	2.5	5	4	3	¥ 2,140
M2 × 0.25	G4	NRZM42.0BP	4P	42	4.5	-	27	3	2.5	5	4	3	¥ 3,250*
M2 × 0.25	G4	NRZM42.0BB	2P	42	4.5	-	27	3	2.5	5	4	3	¥ 3,250*
M2 × 0.25	G5	NRZM52.0BP	4P	42	4.5	-	27	3	2.5	5	4	3	¥ 3,250*
M2 × 0.25	G5	NRZM52.0BB	2P	42	4.5	-	27	3	2.5	5	4	3	¥ 3,250*
M2.2 × 0.45	G5	NRZP52.2FP	4P	42	8.1	-	27	3	2.5	5	4	3	¥ 1,920*
M2.2 × 0.45	G5	NRZP52.2FB	2P	42	8.1	-	27	3	2.5	5	4	3	¥ 1,920*
M2.3 × 0.4	G4	NRZP42.3EP	4P	42	7.2	-	27	3	2.5	5	4	3	¥ 1,920*
M2.3 × 0.4	G4	NRZP42.3EB	2P	42	7.2	-	27	3	2.5	5	4	3	¥ 1,920*
M2.3 × 0.4	G5	NRZP52.3EP	4P	42	7.2	-	27	3	2.5	5	4	3	¥ 1,920*
M2.3 × 0.4	G5	NRZP52.3EB	2P	42	7.2	-	27	3	2.5	5	4	3	¥ 1,920*
M2.3 × 0.4	G6	NRZP62.3EP	4P	42	7.2	-	27	3	2.5	5	4	3	¥ 1,920*
M2.3 × 0.4	G6	NRZP62.3EB	2P	42	7.2	-	27	3	2.5	5	4	3	¥ 1,920*
M2.5 × 0.45	G5	NRZP52.5FP	4P	46	8.1	14	29	3	2.5	5	4	4	¥ 1,630
M2.5 × 0.45	G5	NRZP52.5FB	2P	46	8.1	14	29	3	2.5	5	4	4	¥ 1,630

* = Specified Distribution Items, Made to order products, For improvement, spec may change without advance notice.

Think threads with YAMAWA

JIS

⑥-5

Think threads with YAMAWA For improvement, spec may change without advance notice.

6

JIS

① Spiral Fluted Taps (for blind hole)

② Spiral Fluted Taps (for through hole)

③ Spiral Pointed Taps (for through hole)

④ Hand Taps

⑤ Cemented Carbide Taps

⑥ Roll Taps

⑦ Special Thread Taps (Single Inspection Tools)

⑧ Pipe Taps

⑨ Thread Mills

⑩ Dies

⑪ Center Drills Centering Tools

JIS

⑥-6

6 Roll Tap Series

Overall length	Thread length	Tread + Neck length	Shank length	Shank dia.	Size of square	Length of square
L	ℓ	ℓn	ℓs	Ds	K	ℓk

JIS

N+RZ/N-RZ Thread Forming Taps for Steels

	Size	Class	Code	Chamfer	L (mm)	ℓ (mm)	ℓn (mm)	ℓs (mm)	Ds (mm)	K (mm)	ℓk (mm)	Lobe	TYPE	MSRP
①	M14 × 2	G9	NRZM9014QP	4P	88	26	-	45	10.5	8	11	8	6	¥ 5,830*
	M14 × 2	G9	NRZM9014OB	2P	88	26	-	45	10.5	8	11	8	6	¥ 5,830*
	M14 × 2	G10	NRZM0014QP	4P	88	26	-	45	10.5	8	11	8	6	¥ 5,830*
	M14 × 2	G10	NRZM0014OB	2P	88	26	-	45	10.5	8	11	8	6	¥ 5,830*
②	M14 × 1.5	G9	NRZM90140P	4P	88	26	-	45	10.5	8	11	8	6	¥ 5,830*
	M14 × 1.5	G9	NRZM90140B	2P	88	26	-	45	10.5	8	11	8	6	¥ 5,830*
	M14 × 1	G8	NRZM8014MP	4P	88	26	-	45	10.5	8	11	8	6	¥ 6,750*
	M14 × 1	G8	NRZM8014MB	2P	88	26	-	45	10.5	8	11	8	6	¥ 6,750*
③	M16 × 2	G9	NRZM9016QP	4P	95	26	-	48	12.5	10	13	8	6	¥ 7,770*
	M16 × 2	G9	NRZM9016QB	2P	95	26	-	48	12.5	10	13	8	6	¥ 7,770*
	M16 × 2	G10	NRZM0016QP	4P	95	26	-	48	12.5	10	13	8	6	¥ 7,770*
	M16 × 2	G10	NRZM0016QB	2P	95	26	-	48	12.5	10	13	8	6	¥ 7,770*
	M16 × 1.5	G9	NRZM90160P	4P	95	26	-	48	12.5	10	13	8	6	¥ 7,770*
	M16 × 1.5	G9	NRZM90160B	2P	95	26	-	48	12.5	10	13	8	6	¥ 7,770*
	M16 × 1	G8	NRZM8016MP	4P	95	26	-	48	12.5	10	13	8	6	¥ 9,280*
	M16 × 1	G8	NRZM8016MB	2P	95	26	-	48	12.5	10	13	8	6	¥ 9,280*
	M18 × 1.5	G10	NRZM00180P	4P	100	33	-	51	14	11	14	8	6	¥ 10,400*
④	M20 × 1.5	G9	NRZM90200P	4P	105	33	-	50	15	12	15	8	7	¥ 14,300*
	M20 × 1.5	G9	NRZM90200B	2P	105	33	-	50	15	12	15	8	7	¥ 14,300*
	M20 × 1.5	G10	NRZM00200P	4P	105	33	-	50	15	12	15	8	7	¥ 14,300*
	M20 × 1.5	G10	NRZM00200B	2P	105	33	-	50	15	12	15	8	7	¥ 14,300*
⑤	For Unified Threads													
	No.4-40UNC	G5	NRZM5UN4HB	2P	46	9	14	25	4	3.2	6	4	4	¥ 1,840*
	No.6-32UNC	G6	NRZM6UN6JB	2P	52	11	17	27	5	4	7	4	4	¥ 1,710*
	5/16-18UNC	G7	NRZM7U050P	4P	70	19	-	36	6.2	5	8	6	6	¥ 2,720*
	5/16-18UNC	G7	NRZM7U050B	2P	70	19	-	36	6.2	5	8	6	6	¥ 2,720*
	3/8-24UNF	G7	NRZM7U06MP	4P	75	23	-	38	7	5.5	8	6	6	¥ 3,490*
	3/8-24UNF	G7	NRZM7U06MB	2P	75	23	-	38	7	5.5	8	6	6	¥ 3,490*
	7/16-14UNC	G8	NRZM8U07QP	4P	82	26	-	42	8.5	6.5	9	8	6	¥ 4,900*
	7/16-14UNC	G8	NRZM8U07QB	2P	82	26	-	42	8.5	6.5	9	8	6	¥ 4,900*
	7/16-20UNF	G8	NRZM8U07NP	4P	82	26	-	42	8.5	6.5	9	8	6	¥ 4,900*
	7/16-20UNF	G8	NRZM8U07NB	2P	82	26	-	42	8.5	6.5	9	8	6	¥ 4,900*
	1/2-13UNC	G8	NRZM8U08RP	4P	88	26	-	45	10.5	8	11	8	6	¥ 5,200*
	1/2-13UNC	G8	NRZM8U08RB	2P	88	26	-	45	10.5	8	11	8	6	¥ 5,200*
	1/2-20UNF	G8	NRZM8U08NP	4P	88	26	-	45	10.5	8	11	8	6	¥ 5,200*
	1/2-20UNF	G8	NRZM8U08NB	2P	88	26	-	45	10.5	8	11	8	6	¥ 5,200*

Roll Taps

Special Thread Taps
Simple Inspection Tools

Pipe Taps

Thread Mills

Dies

Center Drills
Centering Tools

6 Roll Tap Series

Overall length	Thread length	Tread + Neck length	Shank length	Shank dia.	Size of square	Length of square
L	ℓ	ℓn	ℓs	Ds	K	ℓk

JIS

S

LS-N-RZ

Long Shank Thread Forming Taps for Steels



Specification



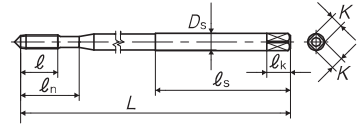
■LS-N-RZ is the long shank forming tap suitable for ferrous materials such as carbon steels, alloy steels and normal steels.

Recommended Tapping Speeds depending on Materials

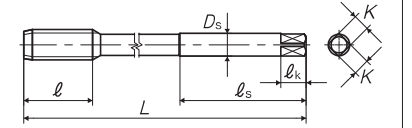


For icon explanation, refer to icon-1

TYPE:1



TYPE:2



Roll Taps

Special Thread Taps
Simple Inspection Tools

Pipe Taps

Thread Mills

Dies

Center Drills
Centering Tools

Size	Class	Code	Chamfer	L (mm)	ℓ (mm)	ℓn (mm)	ℓs (mm)	Ds (mm)	K (mm)	ℓk (mm)	Lobe	TYPE	MSRP
For Metric Threads													
M3 × 0.5	G5	NRZM53.0GP10	4P	100	9	14	40	4	3.2	6	4	1	¥ 3,540*
M3 × 0.5	G5	NRZM53.0GB10	2P	100	9	14	40	4	3.2	6	4	1	¥ 3,540*
M3 × 0.5	G6	NRZM63.0GP10	4P	100	9	14	40	4	3.2	6	4	1	¥ 3,540*
M3 × 0.5	G6	NRZM63.0GB10	2P	100	9	14	40	4	3.2	6	4	1	¥ 3,540*
M4 × 0.7	G6	NRZM64.0IP10	4P	100	11	17	40	5	4	7	4	1	¥ 3,230*
M4 × 0.7	G6	NRZM64.0IB10	2P	100	11	17	40	5	4	7	4	1	¥ 3,230*
M4 × 0.7	G7	NRZM74.0IP10	4P	100	11	17	40	5	4	7	4	1	¥ 3,230*
M4 × 0.7	G7	NRZM74.0IB10	2P	100	11	17	40	5	4	7	4	1	¥ 3,230*
M5 × 0.8	G6	NRZM65.0KP10	4P	100	13	22	40	5.5	4.5	7	4	1	¥ 2,820*
M5 × 0.8	G6	NRZM65.0KB10	2P	100	13	22	40	5.5	4.5	7	4	1	¥ 2,820*
M5 × 0.8	G7	NRZM75.0KP10	4P	100	13	22	40	5.5	4.5	7	4	1	¥ 2,820*
M5 × 0.8	G7	NRZM75.0KB10	2P	100	13	22	40	5.5	4.5	7	4	1	¥ 2,820*
M6 × 1	G7	NRZM76.0MP10	4P	100	15	26	40	6	4.5	7	4	1	¥ 2,420*
M6 × 1	G7	NRZM76.0MP15	4P	150	15	26	40	6	4.5	7	4	1	¥ 4,270*
M6 × 1	G7	NRZM76.0MB10	2P	100	15	26	40	6	4.5	7	4	1	¥ 2,420*
M6 × 1	G7	NRZM76.0MB15	2P	150	15	26	40	6	4.5	7	4	1	¥ 4,270*
M6 × 1	G8	NRZM86.0MP10	4P	100	15	26	40	6	4.5	7	4	1	¥ 2,420*
M6 × 1	G8	NRZM86.0MP15	4P	150	15	26	40	6	4.5	7	4	1	¥ 4,270*
M6 × 1	G8	NRZM86.0MB10	2P	100	15	26	40	6	4.5	7	4	1	¥ 2,420*
M6 × 1	G8	NRZM86.0MB15	2P	150	15	26	40	6	4.5	7	4	1	¥ 4,270*
M8 × 1.25	G7	NRZM78.0NP10	4P	100	19	-	50	6.2	5	8	6	2	¥ 3,110*
M8 × 1.25	G7	NRZM78.0NP15	4P	150	19	-	50	6.2	5	8	6	2	¥ 5,320*
M8 × 1.25	G7	NRZM78.0NB10	2P	100	19	-	50	6.2	5	8	6	2	¥ 3,110*
M8 × 1.25	G7	NRZM78.0NB15	2P	150	19	-	50	6.2	5	8	6	2	¥ 5,320*

Overall length	Thread length	Thread + Neck length	Shank length	Shank dia.	Size of square	Length of square
L	ℓ	ℓn	ℓs	Ds	K	ℓk

6

JIS

Size	Class	Code	Chamfer	L (mm)	ℓ (mm)	ℓn (mm)	ℓs (mm)	Ds (mm)	K (mm)	ℓk (mm)	Lobe	TYPE	MSRP
M10 × 1.5	G7	NRZM70100P10	4P	100	23	-	50	7	5.5	8	8	2	¥ 3,790*
M10 × 1.5	G7	NRZM70100P15	4P	150	23	-	50	7	5.5	8	8	2	¥ 6,190*
M10 × 1.5	G7	NRZM70100B10	2P	100	23	-	50	7	5.5	8	8	2	¥ 3,790*
M10 × 1.5	G7	NRZM70100B15	2P	150	23	-	50	7	5.5	8	8	2	¥ 6,190*
M10 × 1.25	G7	NRZM7010NP15	4P	150	23	-	50	7	5.5	8	8	2	¥ 6,190*
M10 × 1.25	G7	NRZM7010NB15	2P	150	23	-	50	7	5.5	8	8	2	¥ 6,190*

For M6 and smaller, external centers of 2 thread chamfer taps are removed.

Spiral Fluted Taps
(for blind hole)

①

Spiral Fluted Taps
(for through hole)

②

Spiral Pointed Taps
(for through hole)

③

Hand Taps

④

Cemented Carbide Taps

⑤

Roll Taps

⑥

Special Thread Taps
Single inspection tools

⑦

Pipe Taps

⑧

Thread Mills

⑨

Dies

⑩

Center Drills
Centering Tools

⑪

* = Specified Distribution Items, Made to order products.
For improvement, spec may change without advance notice.

Think threads with
YAMAWA

JIS

⑥-16