

8 Pipe Tap Series

Overall length	Thread length	Position on basic dia.	Shank length	Shank dia.	Size of square	Length of square
L	ℓ	ℓg	ℓs	Ds	K	ℓk

JIS

① Spiral Fluted Taps (for blind hole)

② Spiral Fluted Taps (for through hole)

③ Spiral Pointed Taps (for through hole)

④ Hand Taps

⑤ Cemented Carbide Taps

⑥ Roll Taps

⑦ Special Thread Taps (Simple Inspection Tools)

⑧ Pipe Taps

⑨ Thread Mills

⑩ Dies

⑪ Center Drills (Centering Tools)

JIS
⑧-1

JIS

Rc

Hand Taps for Taper Pipe Threads



Specification

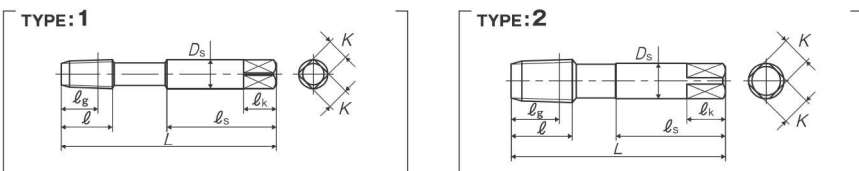


■ The Rc is a hand tap for a tapered pipe threads conforming to ISO specifications. It is used for mating with external tapered pipe threads R(PT).

Recommended Tapping Speeds depending on Materials

Medium carbon steels 中炭素鋼	High carbon steels 高炭素鋼	Alloy steels 合金鋼
~5 (m/min)	~5 (m/min)	~5 (m/min)

For icon explanation, refer to icon-1



Segment : 1G

Size	Class	Code	Chamfer	Basic major dia (mm)	L (mm)	ℓ (mm)	ℓg (mm)	ℓs (mm)	Ds (mm)	K (mm)	ℓk (mm)	No. of flutes	TYPE	MSRP
For Pipe Threads														
Rc 1/16-28	II	TH2RC01K	2.5P	7.723	59	14	10.1	30	8	6	9	4	1	¥ 3,130
Rc 1/8-28	II	TH2RC02K	2.5P	9.728	59	15	10.1	30	8	6	9	4	2	¥ 3,130
Rc 1/4-19	II	TH2RC04-	2.5P	13.157	67	19	15	34	11	9	12	4	2	¥ 4,480
Rc 3/8-19	II	TH2RC06-	2.5P	16.662	75	21	15.4	38	14	11	14	4	2	¥ 7,360
Rc 1/2-14	II	TH2RC08Q	2.5P	20.955	87	26	20.5	44	18	14	17	4	2	¥ 12,100
Rc 3/4-14	II	TH2RC12Q	2.5P	26.441	96	28	21.8	49	23	17	20	4	2	¥ 20,000
Rc 1 -11	II	TH2RC16U	2.5P	33.249	109	33	26	56	26	21	24	5	2	¥ 36,800
Rc 1 1/4-11	II	TH2RC20U	2.5P	41.910	119	36	28.3	61	32	26	30	5	2	¥ 55,600
Rc 1 1/2-11	II	TH2RC24U	2.5P	47.803	125	37	28.3	64	38	29	32	6	2	¥ 77,800
Rc 2 -11	II	TH2RC32U	2.5P	59.614	140	41	32.7	71	46	35	38	6	2	¥ 126,000

Pipe Tap Series

Overall length	Thread length	Position on basic dia.	Shank dia.	Size of square	Length of square
L	ℓ	ℓg	Ds	K	ℓk

8

JIS

① Spiral Fluted Taps (for blind hole)

② Spiral Fluted Taps (for through hole)

③ Spiral Pointed Taps (for through hole)

④ Hand Taps

⑤ Cemented Carbide Taps

⑥ Roll Taps

⑦ Special Thread Taps (Simple Inspection Tools)

⑧ Pipe Taps

⑨ Thread Mills

⑩ Dies

⑪ Center Drills (Centering Tools)

JIS
⑧-2

JIS

PT

Hand Taps for Taper Pipe Threads, Long (ℓg) Type



Specification

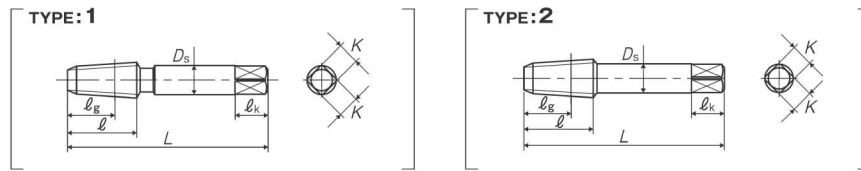


■ The PT is a hand tap for tapered pipe threads and is used for tapping products whose main purpose is the tightness of the threaded portion when connecting pipe parts etc.

Recommended Tapping Speeds depending on Materials

Medium carbon steels 中炭素鋼	High carbon steels 高炭素鋼	Alloy steels 合金鋼
~5 (m/min)	~5 (m/min)	~5 (m/min)

For icon explanation, refer to icon-1



Segment : 1G

Size	Class	Code	Chamfer	Basic major dia (mm)	L (mm)	ℓ (mm)	ℓg (mm)	Ds (mm)	K (mm)	ℓk (mm)	No. of flutes	TYPE	MSRP
For Pipe Threads													
PT 1/16-28	II	TH2T01K-8	2.5P	7.723	55	19	13	8	6	9	4	1	¥ 3,130
PT 1/8-28	II	TH2T02K	2.5P	9.728	55	19	13	8	6	9	4	2	¥ 3,130
PT 1/4-19	II	TH2T04-	2.5P	13.157	62	28	21	11	9	12	4	2	¥ 4,480
PT 3/8-19	II	TH2T06-	2.5P	16.662	65	28	21	14	11	14	4	2	¥ 7,360
PT 1/2-14	II	TH2T08Q	2.5P	20.955	80	35	25	18	14	17	4	2	¥ 12,100
PT 5/8-14	II	TH2T10Q	2.5P	22.911	82	35	25	19	15	18	4	2	¥ 16,000*
PT 3/4-14	II	TH2T12Q	2.5P	26.441	85	35	25	23	17	20	4	2	¥ 20,000
PT 7/8-14	II	TH2T14Q	2.5P	30.201	90	40	28	24	19	22	4	2	¥ 32,500*
PT 1 -11	II	TH2T16U	2.5P	33.249	95	45	32	26	21	24	5	2	¥ 36,800
PT 1 1/8-11	II	TH2T18U	2.5P	37.897	100	45	32	28	21	24	5	2	¥ 52,500*
PT 1 1/4-11	II	TH2T20U	2.5P	41.910	105	45	32	32	26	30	5	2	¥ 55,600
PT 1 1/2-11	II	TH2T24U	2.5P	47.803	110	45	32	38	29	32	6	2	¥ 77,800
PT 1 3/4-11	II	TH2T28U	2.5P	53.746	115	45	32	42	32	35	6	2	¥ 115,000*
PT 2 -11	II	TH2T32U	2.5P	59.614	120	50	35	46	35	38	6	2	¥ 126,000*
PT 2 1/4-11	II	TH2T36U	2.5P	65.710	145	65	50	50	38	42	6	2	¥ 206,000*
PT 2 1/2-11	II	TH2T40U	2.5P	75.184	145	65	50	55	41	44	8	2	¥ 212,000*
PT 3 -11	II	TH2T48U	2.5P	87.884	155	65	52	65	50	52	8	2	¥ 318,000*
PT 3 1/2-11	II	TH2T56U	2.5P	100.330	165	68	52	70	54	58	8	2	¥ 416,000*
PT 4 -11	II	TH2T64U	2.5P	113.030	170	70	55	75	58	62	10	2	¥ 563,000*

8 Pipe Tap Series

Overall length	Thread length	Position on basic dia.	Shank dia.	Size of square	Length of square
L	ℓ	ℓg	Ds	K	ℓk

JIS

① Spiral Fluted Taps (for blind hole)

② Spiral Fluted Taps (for through hole)

③ Spiral Pointed Taps (for through hole)

④ Hand Taps

⑤ Cemented Carbide Taps

⑥ Roll Taps

⑦ Special Thread Taps (Simple Inspection Tools)

⑧ Pipe Taps

⑨ Thread Mills

Dies

⑩

⑪ Center Drills Centering Tools

JIS

PT LH

Hand Taps for Taper Pipe Threads Long (ℓg) Type for LH Threads



Specification

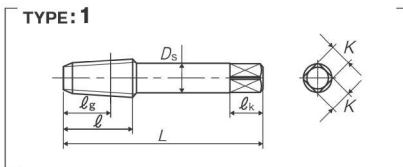


■ The PT LH is a hand tap for left hand tapered pipe threads and is used for tapping products whose main purpose is the tightness of threaded parts in connection with pipe parts etc.

Recommended Tapping Speeds depending on Materials

Medium carbon steels 中炭素鋼	High carbon steels 高炭素鋼	Alloy steels 合金鋼
~5 (m/min)	~5 (m/min)	~5 (m/min)

For icon explanation, refer to icon-1



Segment : 1G

Size	Class	Code	Chamfer	Basic major dia (mm)	L (mm)	ℓ (mm)	ℓg (mm)	Ds (mm)	K (mm)	ℓk (mm)	No. of flutes	TYPE	MSRP
For Pipe Threads													
PT 1/8-28	II	TH2T02K-L	2.5P	9.728	55	19	13	8	6	9	4	1	¥ 4,070*
PT 1/4-19	II	TH2T04-L	2.5P	13.157	62	28	21	11	9	12	4	1	¥ 5,830*
PT 3/8-19	II	TH2T06-L	2.5P	16.662	65	28	21	14	11	14	4	1	¥ 9,570*
PT 1/2-14	II	TH2T08Q-L	2.5P	20.955	80	35	25	18	14	17	4	1	¥ 15,800*
PT 3/4-14	II	TH2T12Q-L	2.5P	26.441	85	35	25	23	17	20	4	1	¥ 26,000*
PT 1-11	II	TH2T16U-L	2.5P	33.249	95	45	32	26	21	24	5	1	¥ 47,900*
PT 1 1/4-11	II	TH2T20U-L	2.5P	41.910	105	45	32	32	26	30	5	1	¥ 72,300*
PT 1 1/2-11	II	TH2T24U-L	2.5P	47.803	110	45	32	38	29	32	6	1	¥ 102,000*
PT 2-11	II	TH2T32U-L	2.5P	59.614	120	50	35	46	35	38	6	1	¥ 164,000*

Pipe Tap Series

Overall length	Thread length	Position on basic dia.	Shank length	Shank dia.	Size of square	Length of square
L	ℓ	ℓg	ℓs	Ds	K	ℓk

8

JIS

① Spiral Fluted Taps (for blind hole)

② Spiral Fluted Taps (for through hole)

③ Spiral Pointed Taps (for through hole)

④ Hand Taps

⑤ Cemented Carbide Taps

⑥ Roll Taps

⑦ Special Thread Taps (Simple Inspection Tools)

⑧ Pipe Taps

⑨ Thread Mills

Dies

⑩

⑪ Center Drills Centering Tools

JIS

PT-X

X Series Hand Taps for Taper Pipe Threads Short (ℓg) Type



Specification

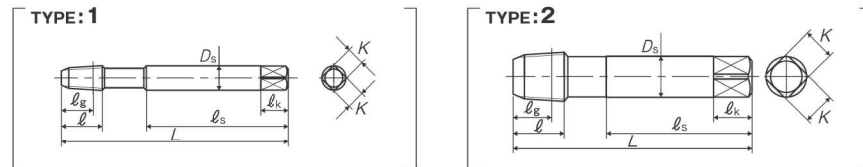


■ PT-X hand tap, adopting new tap blank, ensures properly long projection length of the tool. Having short thread length, this tap is suitable for tapping of such machine components as have the limit in their thickness.

Recommended Tapping Speeds depending on Materials

Medium carbon steels 中炭素鋼	High carbon steels 高炭素鋼	Alloy steels 合金鋼
~5 (m/min)	~5 (m/min)	~5 (m/min)

For icon explanation, refer to icon-1



Segment : 1G

Size	Class	Code	Chamfer	Basic major dia (mm)	L (mm)	ℓ (mm)	ℓg (mm)	ℓs (mm)	Ds (mm)	K (mm)	ℓk (mm)	No. of flutes	TYPE	MSRP
For Pipe Threads														
PT 1/16-28	II	THX2T01K-8	2.5P	7.723	75	13.5	10.5	47	8	6	9	4	1	¥ 3,470
PT 1/8-28	II	THX2T02K	2.5P	9.728	75	13.5	10.5	48	8	6	9	4	2	¥ 3,470
PT 1/4-19	II	THX2T04-	2.5P	13.157	85	16.5	12.5	54	11	9	12	4	2	¥ 4,990
PT 3/8-19	II	THX2T06-	2.5P	16.662	95	18	14	60	14	11	14	4	2	¥ 8,290
PT 1/2-14	II	THX2T08Q	2.5P	20.955	105	22.5	17	64	18	14	17	4	2	¥ 13,500

8 Pipe Tap Series

Overall length	Thread length	Position on basic dia.	Shank dia.	Size of square	Length of square
L	ℓ	ℓg	Ds	K	ℓk

JIS

① Spiral Fluted Taps (for blind hole)

② Spiral Fluted Taps (for through hole)

③ Spiral Pointed Taps (for through hole)

④ Hand Taps

⑤ Cemented Carbide Taps

⑥ Roll Taps

⑦ Special Thread Taps (Simple Inspection Tools)

⑧ Pipe Taps

⑨ Thread Mills

⑩ Dies

⑪ Center Drills Centering Tools

JIS

⑧-5



S-PT

Hand Taps for Taper Pipe Threads Short (ℓg) Type



Specification

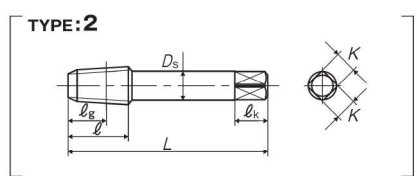
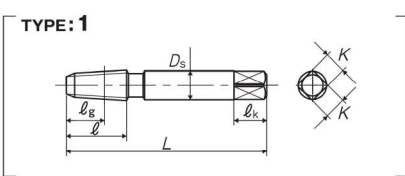


■ The S-PT is a tapered pipe hand tap used for tapping when it is necessary to shorten the fitting length and is used in thread tapping of products such as parts for pipes.

Recommended Tapping Speeds depending on Materials

Medium carbon steels 中炭素鋼	High carbon steels 高炭素鋼	Alloy steels 合金鋼
~5 (m/min)	~5 (m/min)	~5 (m/min)

For icon explanation, refer to icon-1



Segment : 1G

Size	Class	Code	Chamfer	Basic major dia (mm)	L (mm)	ℓ (mm)	ℓg (mm)	Ds (mm)	K (mm)	ℓk (mm)	No. of flutes	TYPE	MSRP
For Pipe Threads													
PT 1/16-28	II	TSPT01K-8	2.5P	7.723	55	16.5	10.5	8	6	9	4	1	¥ 3,130
PT 1/8-28	II	TSPT02K	2.5P	9.728	55	16.5	10.5	8	6	9	4	2	¥ 3,130
PT 1/4-19	II	TSPT04-	2.5P	13.157	62	19.5	12.5	11	9	12	4	2	¥ 4,480
PT 3/8-19	II	TSPT06-	2.5P	16.662	65	21	14	14	11	14	4	2	¥ 7,360
PT 1/2-14	II	TSPT08Q	2.5P	20.955	80	27	17	18	14	17	4	2	¥ 12,100
PT 3/4-14	II	TSPT12Q	2.5P	26.441	85	29	19	23	17	20	4	2	¥ 20,000
PT 1-11	II	TSPT16U	2.5P	33.249	95	35	22	26	21	24	5	2	¥ 36,800
PT 1 1/4-11	II	TSPT20U	2.5P	41.910	105	37.5	24.5	32	26	30	5	2	¥ 55,600
PT 1 1/2-11	II	TSPT24U	2.5P	47.803	110	38.5	25.5	38	29	32	6	2	¥ 77,800
PT 1 3/4-11	II	TSPT28U	2.5P	53.746	115	39.5	26.5	42	32	35	6	2	¥115,000*
PT 2-11	II	TSPT32U	2.5P	59.614	120	42.5	27.5	46	35	38	6	2	¥126,000
PT 2 1/2-11	II	TSPT40U	2.5P	75.184	145	47	32	55	41	44	8	2	¥212,000*
PT 3-11	II	TSPT48U	2.5P	87.884	155	51	36	65	50	52	8	2	¥318,000*



* = Specified Distribution Items. Made to order products. For improvement, spec may change without advance notice.

Pipe Tap Series

Overall length	Thread length	Position on basic dia.	Shank dia.	Size of square	Length of square
L	ℓ	ℓg	Ds	K	ℓk

8

JIS

① Spiral Fluted Taps (for blind hole)

② Spiral Fluted Taps (for through hole)

③ Spiral Pointed Taps (for through hole)

④ Hand Taps

⑤ Cemented Carbide Taps

⑥ Roll Taps

⑦ Special Thread Taps (Simple Inspection Tools)

⑧ Pipe Taps

⑨ Thread Mills

⑩ Dies

⑪ Center Drills Centering Tools

JIS

⑧-6



S-PT LH

Hand Taps for Taper Pipe Threads Short (ℓg) Type for LH Threads



Specification

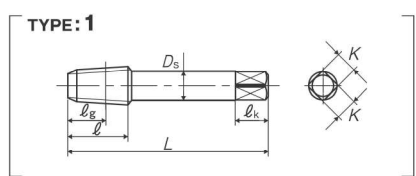


■ The S-PT LH is a hand tap for left hand tapered pipe threads and is used where it is necessary to shorten the fitting length for products such as parts for pipes.

Recommended Tapping Speeds depending on Materials

Medium carbon steels 中炭素鋼	High carbon steels 高炭素鋼	Alloy steels 合金鋼
~5 (m/min)	~5 (m/min)	~5 (m/min)

For icon explanation, refer to icon-1



Segment : 1G

Size	Class	Code	Chamfer	Basic major dia (mm)	L (mm)	ℓ (mm)	ℓg (mm)	Ds (mm)	K (mm)	ℓk (mm)	No. of flutes	TYPE	MSRP
For Pipe Threads													
PT 1/8-28	II	TSPT02K-L	2.5P	9.728	55	16.5	10.5	8	6	9	4	1	¥ 4,070*
PT 1/4-19	II	TSPT04--L	2.5P	13.157	62	19.5	12.5	11	9	12	4	1	¥ 5,830*
PT 3/8-19	II	TSPT06--L	2.5P	16.662	65	21	14	14	11	14	4	1	¥ 9,570*
PT 1/2-14	II	TSPT08Q--L	2.5P	20.955	80	27	17	18	14	17	4	1	¥ 15,800*
PT 3/4-14	II	TSPT12Q--L	2.5P	26.441	85	29	19	23	17	20	4	1	¥ 26,000*
PT 1-11	II	TSPT16U--L	2.5P	33.249	95	35	22	26	21	24	5	1	¥ 47,900*
PT 1 1/4-11	II	TSPT20U--L	2.5P	41.910	105	37.5	24.5	32	26	30	5	1	¥ 72,300*
PT 1 1/2-11	II	TSPT24U--L	2.5P	47.803	110	38.5	25.5	38	29	32	6	1	¥102,000*
PT 2-11	II	TSPT32U--L	2.5P	59.614	120	42.5	27.5	46	35	38	6	1	¥164,000*

* = Specified Distribution Items. Made to order products. For improvement, spec may change without advance notice.



8 Pipe Tap Series

JIS

1 Spiral Fluted Taps (for blind hole)

2 Spiral Fluted Taps (for through hole)

3 Spiral Pointed Taps (for through hole)

4 Hand Taps

5 Cemented Carbide Taps

6 Roll Taps

7 Special Thread Taps (Simple inspection tools)

8 Pipe Taps

9 Thread Mills

10 Dies

11 Center Drills Centering tools

JIS

8-7

JIS

LS-PT

Long Shank Hand Taps for Taper Pipe Threads Long (ℓg) Type

Overall length	Thread length	Position on basic dia.	Shank dia.	Size of square	Length of square
L	ℓ	ℓg	Ds	K	ℓk



Specification

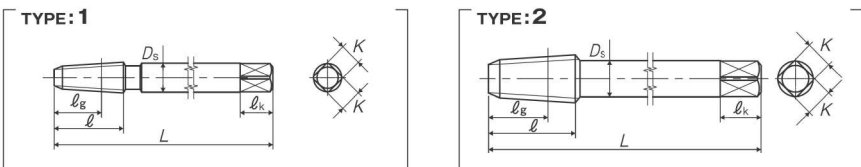


■ The LS-PT is a long shank tapered pipe thread tap and is used for products whose main purpose is the tightness of threaded parts in connection with pipe parts etc.

Recommended Tapping Speeds depending on Materials

Medium carbon steels 中炭素鋼	High carbon steels 高炭素鋼	Alloy steels 合金鋼
~5 (m/min)	~5 (m/min)	~5 (m/min)

For icon explanation, refer to icon-1



Segment : 1G

Size	Class	Code	Chamfer	Basic major dia (mm)	L (mm)	ℓ (mm)	ℓg (mm)	Ds (mm)	K (mm)	ℓk (mm)	No. of flutes	TYPE	MSRP
For Pipe Threads													
PT 1/16-28	II	L10T01K-8	2.5P	7.723	100	19	13	8	6	9	4	1	¥ 6,670*
PT 1/8-28	II	L10T02K	2.5P	9.728	100	19	13	8	6	9	4	2	¥ 6,670
PT 1/8-28	II	L15T02K	2.5P	9.728	150	19	13	8	6	9	4	2	¥ 10,600
PT 1/8-28	II	L20T02K	2.5P	9.728	200	19	13	8	6	9	4	2	¥ 15,100*
PT 1/4-19	II	L10T04-	2.5P	13.157	100	28	21	11	9	12	4	2	¥ 7,200
PT 1/4-19	II	L15T04-	2.5P	13.157	150	28	21	11	9	12	4	2	¥ 10,800
PT 1/4-19	II	L20T04-	2.5P	13.157	200	28	21	11	9	12	4	2	¥ 15,300*
PT 3/8-19	II	L10T06-	2.5P	16.662	100	28	21	14	11	14	4	2	¥ 12,100
PT 3/8-19	II	L12T06-	2.5P	16.662	120	28	21	14	11	14	4	2	¥ 12,400*
PT 3/8-19	II	L15T06-	2.5P	16.662	150	28	21	14	11	14	4	2	¥ 17,800
PT 3/8-19	II	L20T06-	2.5P	16.662	200	28	21	14	11	14	4	2	¥ 25,100*
PT 1/2-14	II	L15T08Q	2.5P	20.955	150	35	25	18	14	17	4	2	¥ 21,400
PT 1/2-14	II	L20T08Q	2.5P	20.955	200	35	25	18	14	17	4	2	¥ 30,500*
PT 3/4-14	II	L15T12Q	2.5P	26.441	150	35	25	23	17	20	4	2	¥ 33,400
PT 3/4-14	II	L20T12Q	2.5P	26.441	200	35	25	23	17	20	4	2	¥ 40,500*
PT 1-11	II	L15T16U	2.5P	33.249	150	45	32	26	21	24	5	2	¥ 47,100
PT 1-11	II	L20T16U	2.5P	33.249	200	45	32	26	21	24	5	2	¥ 57,500*
PT 1 1/4-11	II	L20T20U	2.5P	41.910	200	45	32	32	25	30	5	2	¥ 85,500*
PT 1 1/2-11	II	L20T24U	2.5P	47.803	200	45	32	38	29	32	6	2	¥ 109,000*
PT 2-11	II	L20T32U	2.5P	59.614	200	50	35	46	35	38	6	2	¥ 154,000*

Think threads with YAMAWA

* = Specified Distribution Items. Made to order products. For improvement, spec may change without advance notice.

Pipe Tap Series

8

JIS

1 Spiral Fluted Taps (for blind hole)

2 Spiral Fluted Taps (for through hole)

3 Spiral Pointed Taps (for through hole)

4 Hand Taps

5 Cemented Carbide Taps

6 Roll Taps

7 Special Thread Taps (Simple inspection tools)

8 Pipe Taps

9 Thread Mills

10 Dies

11 Center Drills Centering tools

JIS

8-8

JIS

LS-S-PT

Long Shank Hand Taps for Taper Pipe Threads, Short (ℓg) Type

Overall length	Thread length	Position on basic dia.	Shank dia.	Size of square	Length of square
L	ℓ	ℓg	Ds	K	ℓk



Specification

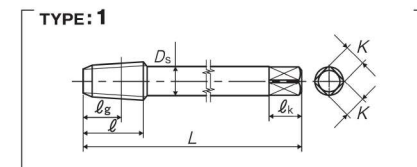


■ The LS-S-PT is a long shank tapered pipe tap and is used when it is necessary to shorten the fitting length in a product whose main purpose is the tightness of the threaded portion in the connection of pipe parts etc.

Recommended Tapping Speeds depending on Materials

Medium carbon steels 中炭素鋼	High carbon steels 高炭素鋼	Alloy steels 合金鋼
~5 (m/min)	~5 (m/min)	~5 (m/min)

For icon explanation, refer to icon-1



Segment : 1G

Size	Class	Code	Chamfer	Basic major dia (mm)	L (mm)	ℓ (mm)	ℓg (mm)	Ds (mm)	K (mm)	ℓk (mm)	No. of flutes	TYPE	MSRP
For Pipe Threads													
PT 1/8-28	II	TSPT02KL10	2.5P	9.728	100	16.5	10.5	8	6	9	4	1	¥ 6,670
PT 1/8-28	II	TSPT02KL15	2.5P	9.728	150	16.5	10.5	8	6	9	4	1	¥ 10,600
PT 1/8-28	II	TSPT02KL20	2.5P	9.728	200	16.5	10.5	8	6	9	4	1	¥ 15,100*
PT 1/4-19	II	TSPT04-L10	2.5P	13.157	100	19.5	12.5	11	9	12	4	1	¥ 7,200
PT 1/4-19	II	TSPT04-L15	2.5P	13.157	150	19.5	12.5	11	9	12	4	1	¥ 10,800
PT 1/4-19	II	TSPT04-L20	2.5P	13.157	200	19.5	12.5	11	9	12	4	1	¥ 15,300*
PT 3/8-19	II	TSPT06-L10	2.5P	16.662	100	21	14	14	11	14	4	1	¥ 12,100
PT 3/8-19	II	TSPT06-L12	2.5P	16.662	120	21	14	14	11	14	4	1	¥ 12,400*
PT 3/8-19	II	TSPT06-L15	2.5P	16.662	150	21	14	14	11	14	4	1	¥ 17,800
PT 3/8-19	II	TSPT06-L20	2.5P	16.662	200	21	14	14	11	14	4	1	¥ 25,100*
PT 1/2-14	II	TSPT08QL15	2.5P	20.955	150	27	17	18	14	17	4	1	¥ 21,400
PT 1/2-14	II	TSPT08QL20	2.5P	20.955	200	27	17	18	14	17	4	1	¥ 30,500*
PT 3/4-14	II	TSPT12QL15	2.5P	26.441	150	29	19	23	17	20	4	1	¥ 33,400
PT 3/4-14	II	TSPT12QL20	2.5P	26.441	200	29	19	23	17	20	4	1	¥ 40,500*
PT 1-11	II	TSPT16UL15	2.5P	33.249	150	35	22	26	21	24	5	1	¥ 47,100
PT 1-11	II	TSPT16UL20	2.5P	33.249	200	35	22	26	21	24	5	1	¥ 57,500*

* = Specified Distribution Items. Made to order products. For improvement, spec may change without advance notice.

Think threads with YAMAWA

8 Pipe Tap Series

JIS

① Spiral Fluted Taps (for blind hole)

② Spiral Fluted Taps (for through hole)

③ Spiral Pointed Taps (for through hole)

④ Hand Taps

⑤ Cemented Carbide Taps

⑥ Roll Taps

⑦ Special Thread Taps (Simple Inspection Tools)

⑧ Pipe Taps

⑨ Thread Mills

Dies

⑩

⑪ Center Drills Centering Tools

Overall length	Thread length	Position on basic dia.	Shank dia.	Size of square	Length of square
L	ℓ	ℓg	Ds	K	ℓk

JIS

SP-PT

Spiral Fluted Taps for Taper Pipe Threads, Long (ℓg) Type



Specification

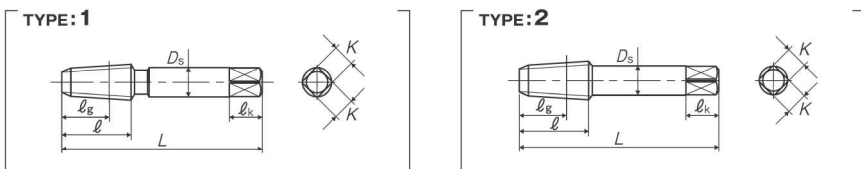


■ The SP-PT is a spiral flute tapered pipe tap and is used for thread products whose main purpose is the tightness of threaded parts in connection with pipe parts etc.

Recommended Tapping Speeds depending on Materials

Low carbon steels 低炭素鋼	Medium carbon steels 中炭素鋼	High carbon steels 高炭素鋼
~5 (m/min)	~5 (m/min)	~5 (m/min)

For icon explanation, refer to icon-1



Segment : 1G

Size	Class	Code	Chamfer	Basic major dia (mm)	L (mm)	ℓ (mm)	ℓg (mm)	Ds (mm)	K (mm)	ℓk (mm)	No. of flutes	TYPE	MSRP
For Pipe Threads													
PT 1/16-28	II	SH2T01K-8	2.5P	7.723	55	19	13	8	6	9	3	1	¥ 4,000*
PT 1/8-28	II	SH2T02K	2.5P	9.728	55	19	13	8	6	9	3	2	¥ 4,000
PT 1/4-19	II	SH2T04-	2.5P	13.157	62	28	21	11	9	12	3	2	¥ 5,730
PT 3/8-19	II	SH2T06-	2.5P	16.662	65	28	21	14	11	14	3	2	¥ 9,420
PT 1/2-14	II	SH2T08Q	2.5P	20.955	80	35	25	18	14	17	4	2	¥ 15,500
PT 3/4-14	II	SH2T12Q	2.5P	26.441	85	35	25	23	17	20	4	2	¥ 25,500
PT 1-11	II	SH2T16U	2.5P	33.249	95	45	32	26	21	24	4	2	¥ 47,100
PT 1 1/4-11	II	SH2T20U	2.5P	41.910	105	45	32	32	26	30	4	2	¥ 71,200*
PT 1 1/2-11	II	SH2T24U	2.5P	47.803	110	45	32	38	29	32	4	2	¥ 99,600*
PT 2-11	II	SH2T32U	2.5P	59.614	120	50	35	46	35	38	4	2	¥ 161,000*

Pipe Tap Series

8

JIS

① Spiral Fluted Taps (for blind hole)

② Spiral Fluted Taps (for through hole)

③ Spiral Pointed Taps (for through hole)

④ Hand Taps

⑤ Cemented Carbide Taps

⑥ Roll Taps

⑦ Special Thread Taps (Simple Inspection Tools)

⑧ Pipe Taps

⑨ Thread Mills

Dies

⑩

⑪ Center Drills Centering Tools

Overall length	Thread length	Position on basic dia.	Shank dia.	Size of square	Length of square
L	ℓ	ℓg	Ds	K	ℓk

JIS

SP-S-PT

Spiral Fluted Taps for Taper Pipe Threads Short (ℓg) Type



Specification

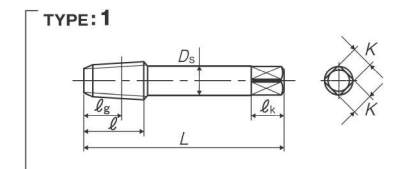


■ The SP-S-PT is a spiral flute tapered pipe tap and is used for thread tapping when it is necessary to shorten the fitting length with a product whose main purpose is the tightness of the threaded portion when connecting pipe parts etc.

Recommended Tapping Speeds depending on Materials

Low carbon steels 低炭素鋼	Medium carbon steels 中炭素鋼	High carbon steels 高炭素鋼
~5 (m/min)	~5 (m/min)	~5 (m/min)

For icon explanation, refer to icon-1



Segment : 1G

Size	Class	Code	Chamfer	Basic major dia (mm)	L (mm)	ℓ (mm)	ℓg (mm)	Ds (mm)	K (mm)	ℓk (mm)	No. of flutes	TYPE	MSRP
For Pipe Threads													
PT 1/8-28	II	SSPT02K	2.5P	9.728	55	16.5	10.5	8	6	9	3	1	¥ 4,000
PT 1/4-19	II	SSPT04-	2.5P	13.157	62	19.5	12.5	11	9	12	3	1	¥ 5,730
PT 3/8-19	II	SSPT06-	2.5P	16.662	65	21	14	14	11	14	3	1	¥ 9,420
PT 1/2-14	II	SSPT08Q	2.5P	20.955	80	27	17	18	14	17	4	1	¥ 15,500
PT 3/4-14	II	SSPT12Q	2.5P	26.441	85	29	19	23	17	20	4	1	¥ 25,500
PT 1-11	II	SSPT16U	2.5P	33.249	95	35	22	26	21	24	4	1	¥ 47,100
PT 1 1/4-11	II	SSPT20U	2.5P	41.910	105	37.5	24.5	32	26	30	4	1	¥ 71,200*
PT 1 1/2-11	II	SSPT24U	2.5P	47.803	110	38.5	25.5	38	29	32	4	1	¥ 99,600*
PT 2-11	II	SSPT32U	2.5P	59.614	120	42.5	27.5	46	35	38	4	1	¥ 161,000*

JIS

⑧-9

Think threads with YAMAWA

* = Specified Distribution Items. Made to order products. For improvement, spec may change without advance notice.

* = Specified Distribution Items. Made to order products. For improvement, spec may change without advance notice.

Think threads with YAMAWA

JIS

⑧-10

8 Pipe Tap Series

Overall length	Thread length	Position on basic dia.	Shank length	Shank dia.	Size of square	Length of square
L	ℓ	ℓ _g	ℓ _s	D _s	K	ℓ _k

JIS

① Spiral Fluted Taps (for blind hole)

② Spiral Fluted Taps (for through hole)

③ Spiral Pointed Taps (for through hole)

④ Hand Taps

⑤ Cemented Carbide Taps

⑥ Roll Taps

⑦ Special Thread Taps (Simple Inspection Tools)

⑧ Pipe Taps

⑨ Thread Mills

⑩ Dies

⑪ Center Drills (Centering Tools)

JIS

⑧-11



SP-PT-X

X Series Spiral Fluted Taps for Taper Pipe Threads Short (ℓ_g) Type



Specification

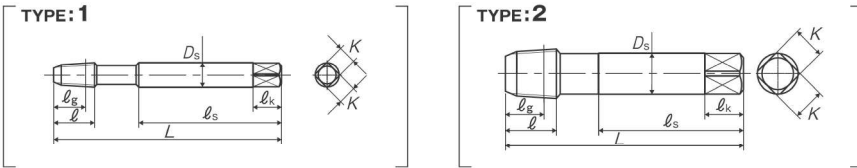


■SP-PT-X spiral fluted tap, adopting new blank, ensures properly long projection length of the tool. Having short thread length, this tap is suitable for tapping of such machine components as have the limit in their thickness.

Recommended Tapping Speeds depending on Materials

Low carbon steels 低炭素鋼	Medium carbon steels 中炭素鋼	High carbon steels 高炭素鋼
~5 (m/min)	~5 (m/min)	~5 (m/min)

For icon explanation, refer to icon-1



Segment : 1G

Size	Class	Code	Chamfer	Basic major dia (mm)	L (mm)	ℓ (mm)	ℓ _g (mm)	ℓ _s (mm)	D _s (mm)	K (mm)	ℓ _k (mm)	No. of flutes	TYPE	MSRP
For Pipe Threads														
PT 1/16-28	II	SHX2T01K-8	2.5P	7.723	75	13.5	10.5	47	8	6	9	3	1	¥ 3,990
PT 1/8-28	II	SHX2T02K	2.5P	9.728	75	13.5	10.5	48	8	6	9	3	2	¥ 3,990
PT 1/4-19	II	SHX2T04-	2.5P	13.157	85	16.5	12.5	54	11	9	12	3	2	¥ 5,740
PT 3/8-19	II	SHX2T06-	2.5P	16.662	95	18	14	60	14	11	14	3	2	¥ 9,530
PT 1/2-14	II	SHX2T08Q	2.5P	20.955	105	22.5	17	64	18	14	17	4	2	¥ 15,500