

Order Code	Description
<input checked="" type="checkbox"/> UTGP1	PosiTector Standard with UTG P Probe
<input type="checkbox"/> UTGP3	PosiTector Advanced with UTG P Probe

PosiTector <i>UTG</i> Ultrasonic Thickness Gage	Compare PosiTector Gage Bodies	
Features	Standard	Advanced
<b>NEW</b> Larger 2.8" impact resistant color touchscreen with redesigned keypad for quick menu navigation	•	
HiLo alarm—Audibly and visibly alerts when measurements exceed your specified limits	•	•
Min Scan mode—take continuous readings and record min/max thicknesses—ideal for quick inspection over a large area	•	•
A Scan—with adjustable Gain and screen capture for further analysis and documentation		•
B Scan—displays a cross sectional profile of the test material		•
Live graphing of measurement data		•
<b>NEW</b> Touchscreen keyboard for quickly renaming batches, adding notes, and more		•
<b>NEW</b> Prompted Batch Mode—create pre-defined batches with on-screen text and image prompts for each reading		•
Statistics Mode—Instantly calculate average, standard deviation, min/max thickness and number of readings while measuring	•	•
Two year warranty on body AND probe	•	•
Reading Storage Capacity	1,000 per probe	250,000 in up to 1,000 batches
Connection Options		
USB port for fast, simple connection to a PC and to supply continuous power. USB cable included.	•	•
WiFi technology wirelessly synchronizes with PosiSoft.net and downloads software updates		•
<b>Bluetooth 4.0 Technology</b> for data transfer to a mobile device running the PosiTector App or optional portable printer. <b>BLE API</b> available for integration into third-party software.		•



PosiTector UTG P1

Removable Cabled Probe	Probe Model UTG P	
	Probe Type:	15 MHz Single Element Delay Line
	Thru-Paint Capability:	Yes
	*Measurement Range - Steel	0.008" to 0.475" 0.2 mm to 12.0 mm
	*Measurement Range - Plastic	0.005" to 0.165" 0.125 mm to 4.500 mm
	Resolution:	0.001" 0.01 mm
	*Accuracy:	±0.0004" ±0.01 mm
*Measurement range is for carbon steel and depends upon surface condition, temperature, and material.		

UTG P Probe designed for high resolution measurements and thin materials including metals and plastics. Automatic Multi-Echo mode ensures the best accuracy on thin metals.

- 15 MHz Single Element Delay Line with cabled probe
- Field replaceable transducer
- Auto Single and Multiple Echo mode depending on material and thickness

©DeFelsko Corporation USA 2021. All Rights Reserved. Technical Data subject to change without notice. • PUTG.v.LW/W2107

## All Gages Feature...



### Simple

- Pre-programmed velocities—simply select from a list of common materials or enter a custom value with ease
- SmartCouple™ mode eliminates unintentional decoupling—ensures continuous measurements on scaled or pitted surfaces—ideal for analyzing large areas using multiple passes
- **NEW** Larger 2.8" impact resistant color touchscreen with redesigned keypad for quick menu
- **NEW** On-gage help explains menu items at the touch of a button
- RESET feature instantly restores factory settings



### Durable

- **NEW** Weatherproof, dustproof, and water-resistant—IP65-rated enclosure
- **NEW** Ergonomic design with durable rubberized grip
- Shock-absorbing protective rubber holster for added impact resistance
- Two year warranty on gage body AND probe



### Accurate

- Precision transducers provide fast, accurate readings
- Certificate of Calibration showing traceability to NIST included
- Built-in temperature compensation ensures measurement accuracy
- Conforms to national and international standards including ASTM E797



### Versatile

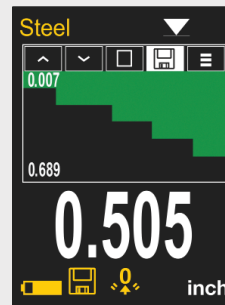
- Selectable display languages
- **NEW** Auto rotating display with Flip Lock

Order Code	Description
<input checked="" type="checkbox"/> UTGP1	PosiTector Standard with UTG P Probe
<input type="checkbox"/> UTGP3	PosiTector Advanced with UTG P Probe



### Powerful

- Min Scan mode—take continuous readings and record min/max thicknesses—ideal for quick inspection over a large area
- Continually displays/updates average, standard deviation, min/max, and number of readings while measuring
- **NEW** Screen Capture—save 100 screen images for record keeping and review
- **NEW** Instant-on feature quickly powers up the gage if recently powered down
- **NEW** Up to 30% longer battery life
- USB port for fast, simple connection to a PC and to supply continuous power. USB cable included.
- Every stored measurement is date and time stamped
- Includes PosiSoft suite of software for viewing and reporting data (see page 3) for a complete overview of these options.



### Advanced Models Feature A-Scan & B-Scan

**A-Scan** with adjustable Gain and screen capture. UTG M and UTG P probes include dual cursors to measure the distance between echoes.

**B-Scan**—displays a cross sectional profile of the test material (*shown on left*)



### Award Winning Compatibility!

PosiTector body accepts all PosiTector *UTG, 6000, 200, RTR, SPG, DPM, SST, and SHD* probes easily converting from an ultrasonic wall thickness gage to a coating thickness gage, dew point meter, surface profile gage, soluble salt tester, or hardness tester.



**Comes complete** with PosiTector gage body, UTG P probe, couplant (ultrasonic gel), protective rubber holster, wrist strap, 3 AAA alkaline batteries, instructions, protective lens shield, convenient carrying case, Long Form Certificate of Calibration traceable to NIST or PTB, USB cable, PosiSoft Software, two (2) year warranty.

**\*SIZE:** 127 x 66 x 25.4 mm (5" x 2.6" x 1")

**\*BODY WEIGHT:** 137 g (4.9 oz.) without batteries

**CONFORMS TO:** ASTM E797

\*Size and weight are for the PosiTector gage body only and do not include the probe.

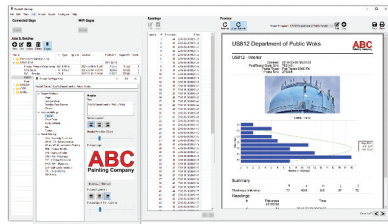
# PosiSoft® Suite of Software

Four FREE and unique ways to view and report your PosiTector and PosiTest data

## PosiSoft Desktop — PC/Mac

Powerful desktop software for downloading, viewing, printing, and archiving measurement data. No internet connection required.

- **NEW** Import readings directly from the gage via WiFi, USB, or from legacy PosiSoft desktop versions
- **NEW** Updated design and functionality
- Synchronize measurement data including readings, notes, and pictures between PosiSoft Desktop, PosiTector App and PosiSoft.net
- Import/Export Templates and Job Folders to share with other users
- **NEW** Drag and Drop **Custom Fields**—import PDF forms and overlay fields easily for automatic population of inspection and measurement data
- Report preview automatically refreshes as changes are made



### Prompted Batch Mode

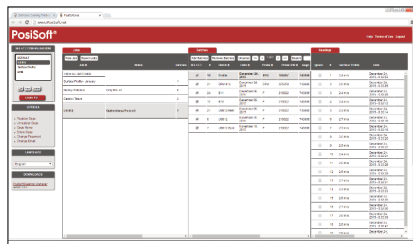
Create pre-defined batches with onscreen text and image prompts for each reading and upload to PosiTector 6000, 200, and UTG gages (*Advanced models only*).

- Ideal for ensuring a consistent measurement pattern for repetitive jobs or when specific measurement locations are required
- Create and store multiple templates for different jobs

## PosiSoft.net — Web based

A web-based application offering secure, centralized management of readings. Access your data from any web-connected device.

- Synchronize data when connected via USB or WiFi
- Synchronize measurement data including readings, notes, and pictures with PosiSoft Desktop and PosiTector App
- Securely store measurement data in the cloud and share with authorized users via a secure login



## PosiTector App — Mobile

Mobile app connects PosiTector Advanced instruments, the PosiTector SmartLink, and the PosiTest AT-A to your *iOS* or *Android* smart device.

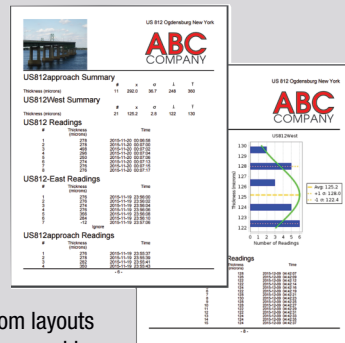
- Auto pairing Bluetooth BLE connection
- Automatically generate user-formatted reports and share via email, text, cloud storage services like Dropbox, and more
- Export readings to PosiSoft Desktop or synchronize readings to and from PosiSoft.net for further reporting and archival options



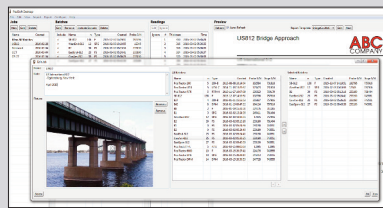
## PosiSoft Custom PDF Report Generator

Easily create reports from your measurement data in seconds.

featured on  
PosiSoft Desktop  
PosiSoft.net  
PosiTector App

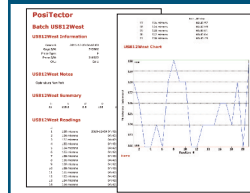


- Include inspection information such as on-site pictures, screen captures, notes, and more to communicate important details
- Create and save multiple custom layouts as templates—insert cover pages, add logos/images, and select font and point size
- Select the information to include for each product type—charts, histograms, readings, time stamps, and more
- Compile multi-batch reports from one or more probes and instrument types
- Export readings as comma separated value (.CSV) files which can easily be imported into Excel and other supporting applications



**Folders** feature consolidates batches into groups to keep measurement data organized and to quickly create multi-batch reports (not available on PosiTector App).

## PosiSoft USB Drive — Gage based



A simple gage interface to retrieve data in a manner similar to USB flash drives or cameras. No software to install or internet connection required.

- View and print readings and graphs using universal PC/Mac web browsers and file explorers
- Measurement data can be printed quickly from a formatted HTML report or exported in .CSV format for further analysis in spreadsheets
- Simple file management—Copy and paste measurement data from the PosiTector to a local folder on your computer, network folder, or cloud drive
- Access stored screen captures (snapshots) of the PosiTector display



PosiTector and PosiTest AT-A instruments can integrate with third-party software, drones, ROVs, PLCs, and robotic devices using several industry-standard communication protocols.

## PosiTector Developer Resources

including Bluetooth 4.0, WiFi, Keyboard Mode, and USB Serial

©DeFelsko Corporation USA 2021. All Rights Reserved. Technical Data subject to change without notice. • Printed in USA • PSoft.v.LW/W2104

**DeFelsko®**  
Inspection Instruments

DeFelsko Corporation • 800 Proctor Ave. • Ogdensburg, New York 13669-2205 USA  
Toll Free 1-800-448-3835 • Tel: +1-315-393-4450  
techsale@defelsko.com • www.defelsko.com

  
Made in U.S.A.