

ABS Coolant-proof Digimatic Indicator **ID-N/ID-B**

World's highest water/dust proof IP66. A 35mm wide slim body* design offers multipoint measurement.

*Smallest in body width among display built-in digital indicators as of research, 2005 according to our company's research.

SMALL TOOL INSTRUMENTS
AND DATA MANAGEMENT



ABSOLUTE™



- Staubdicht und wasser-
geschützt IP66

IP66

Absolute Coolant-Proof Digimatic Indicator ID-N/ID-B

World's highest water-proof/dust-proof rating (IP66) combined with a 35mm body width



1. Proven ABS (absolute) sensor

Mitutoyo's unique ABS (Absolute) sensor restores the last origin position automatically when the indicator is turned on.



This allows quick-start operation, which is especially useful in multipoint measurement. Also, INC (Incremental) measurements can be made from any arbitrary position at the touch of a button, with restoration to ABS measurement mode being just as easy.

2. Rated to IP66 water- and dust-proofing standard and oil resistance improved



This indicator can be used satisfactorily even in adverse environments where it is subject to splashing by cutting fluid and coolant. Oil-resistant materials are used for external parts such as switches.



3. Slim body design is advantageous for multipoint measurements

Slim design extends the application range to multipoint measurement and allows fixture downsizing.



4. Improvement in workability with the LCD readout-rotation function

The LCD readout can be switched 180° to allow easy reading in multipoint measurement situations where space is restricted.



5. Back plunger design: ID-B

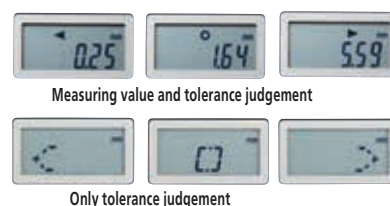


Mitutoyo has succeeded in digitalization of the back plunger type widely used for dial indicators. A 5mm-stroke plunger with a higher degree of accuracy has been implemented by adopting a direct reading scale for plunger displacement instead of the usual magnifying mechanism using gears.

6. Built-in tolerance judgment function

This function provides OK, +NG, or -NG judgment of measurement with respect to the preset upper and lower limit values, indicating the status of a measurement with the appropriate symbol.

If required, only the OK/NG judgment can be displayed and in this case the symbols are much larger.



7. Switchable resolution

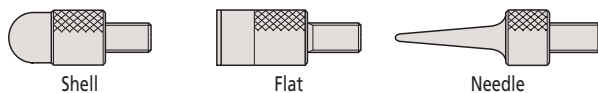
The 0.001mm (.00005") model can be switched to 0.01mm (.0005") resolution if required. Accuracy remains constant irrespective of the resolution setting.



8. Carbide contact points supplied as standard

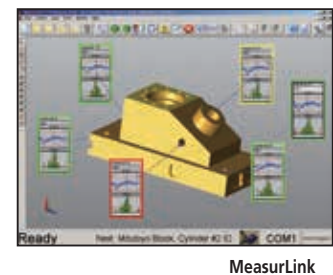
Carbide contact points are standard on these indicators to provide outstanding durability. The full range of interchangeable Mitutoyo indicator contact points, spindle extension rods, etc., are also available to extend the range of application.

Optional contact points



9. Water-proof data output connector

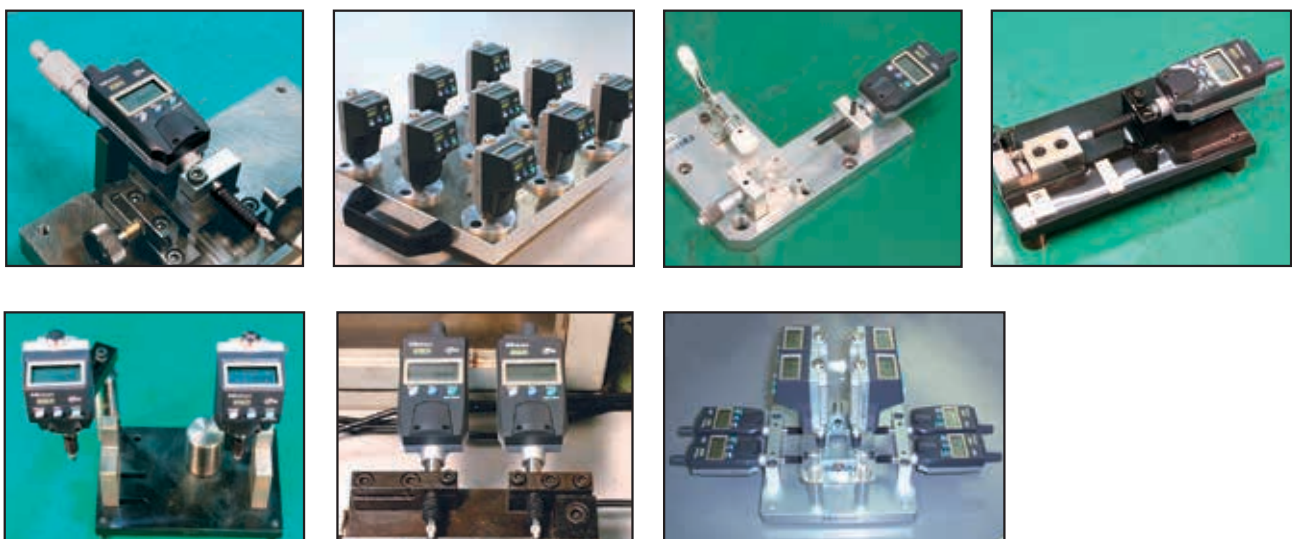
All models incorporate a data output connector that maintains the water resistance of the indicator. This output function enables you to develop an SPC measuring system based on the measurement data collected. The connector is provided with external zero-set and external preset recall terminals so you can not only perform zero-setting or preset recall remotely, but also batch zero-setting or preset recall for all indicators during multi-point measurement. This can improve measurement efficiency enormously.



10. Built-in hold preset function

This function allows you to set a display value that has been held as a preset value. If a master workpiece is available, it is possible to set a preset value easily without entering it just by switch operation.

Example:





Functions:

- Zero-setting function
- Presetting function
- Direction switching function
- Tolerance judgment function
- Data output function
- Display value hold function
- Low battery alarm function
- Error alarm function (display value overflow, tolerance setting error, sensor contamination error)

Specifications:

Model No.	ID-N	ID-B	ID-N	ID-B	ID-N	ID-B	ID-N	ID-B
Order No.	543-570	543-580	543-575	543-585	543-571	543-581	543-576	543-586
Measuring Range	12.7mm	5.08mm	12.7mm	5.08mm	.5"(12.7mm)	.2"(5.08mm)	5"(12.7mm)	.2"(5.08mm)
Resolution	0.01mm		0.001mm/0.01mm		.0005"/0.01mm		.00005"/.0005" 0.001mm/0.01mm	
Accuracy*1	0.02mm		0.003mm/0.01mm		.0008"/0.02mm		.00012"/.0004" 0.003mm/0.01mm	
Stem	ø8mm				3/8" DIA (ø9.52mm)			
Contact point	Carbide (M2.5 x 0.45)				Carbide (#4-48UNF)			
Protection level	IP-66							
Measuring force	2.5N	2N	2.5N	2N	2.5N	2N	2.5N	2N
Plunger direction	Measures in both directions							
Battery	SR44(938882) x 1pc							
Battery life	Approx. 7,000 hours in continuous use*2							
Scale	Electrostatic capacitance absolute linear encoder							
Quantizing error	1 count							
Operating temp.	0°C to 40°C							
Storage temp.	-10°C to 60°C							
Mass	130g							

*1 : 20°C, excluding quantizing error

*2 : The battery life is reduced when this instrument is connected to an external device (e.g. a counter).

Optional accessories:

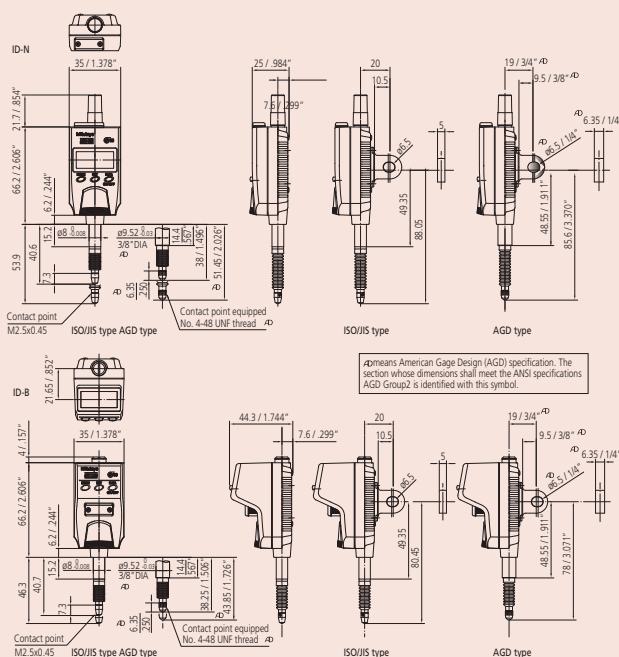
- **No. 21EZA105:** Lifting knob (for ISO/JIS model)
- **No. 21EZA150:** Lifting knob (for AGD model)
- **No. 21EZA145:** Lug (for JIS/ISO model)
- **No. 21EZA146:** Lug (for AGD model)
- **No. 02ACA376:** Rubber boot (for ID-N, NBR)
- **No. 238774:** Rubber boot (for ID-N, silicon)
- **No. 125317:** Rubber boot (for ID-B, NBR)
- **No. 21EAA212:** Rubber boot (for ID-B, silicon)
- **No. 21EAA194:** Connecting cable (1m)
- **No. 21EAA190:** Connecting cable (2m)
- **No. 21EAA210:** Bifurcated connecting cable with zero-setting terminal(1m)
- **No. 21EAA211:** Bifurcated connecting cable with zero-setting terminal (2m)

Standard accessories:

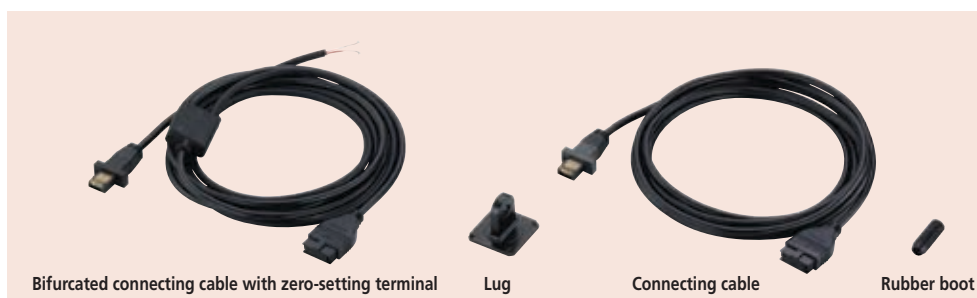
- User's manual
- Battery: SR44 (938882) x 1pc
- Screwdriver (05CZA619)



Dimensions:



Specifications are subject to change without notice.





**Whatever your challenges are,
Mitutoyo supports you from start to finish.**

Mitutoyo is not only a manufacturer of top quality measuring products but one that also offers qualified support for the lifetime of the equipment, backed up by comprehensive services that ensure your staff can make the very best use of the investment.

Apart from the basics of calibration and repair, Mitutoyo offers product and metrology training, as well as IT support for the sophisticated software used in modern measuring technology. We can also design, build, test and deliver bespoke measuring solutions and even, if deemed cost-effective, take your critical measurement challenges in-house on a sub-contract basis.

Note: Product illustrations are without obligation. Product descriptions, in particular any and all technical specifications, are only binding when explicitly agreed upon.

MITUTOYO and MiCAT are either registered trademarks or trademarks of Mitutoyo Corp. in Japan and/or other countries/regions. Other product, company and brand names mentioned herein are for identification purposes only and may be the trademarks of their respective holders.

Mitutoyo

Mitutoyo Asia Pacific Pte. Ltd.

Company Reg No. 197800892N

24 Kallang Avenue, Mitutoyo Building, Singapore 339415

Tel: (65) 6294 2211 Fax: (65) 6299 6666

E-mail: mapsg@mitutoyo.com.sg



**www.mitutoyo.com.sg | www.mitutoyo.com.my
www.mitutoyo.co.th | www.mitutoyo.co.id
www.mitutoyo.com.vn | www.mitutoyo.com.ph**

Mitutoyo (Malaysia) Sdn. Bhd.

Mah Sing Integrated Industrial Park,
4, Jalan Utarid U5/14, Section U5,
40150 Shah Alam, Selangor, Malaysia
Tel: (60) 3-7845 9318
Fax: (60) 3-7845 9346
E-mail: mmsb@mitutoyo.com.my

Penang Branch

Tel: (60) 4-641 1998 Fax: (60) 4-641 2998
E-mail: mmsbpen@mitutoyo.com.my

Johor Branch

Tel: (60) 7-352 1626 Fax: (60) 7-352 1628
E-mail: mmsbjhr@mitutoyo.com.my

Mitutoyo (Thailand) Co., Ltd.

76/3-5, Chaengwattana Road, Kwaeng
Anusaowaree, Khet Bangkaen,
Bangkok 10220, Thailand
Tel: (66) 2080 3500
Fax: (66) 2521 6136
E-mail: office@mitutoyo.co.th

Chonburi Branch

Tel: (66) 2080 3563 Fax: (66) 3834 5788

Amata Nakorn Branch

Tel: (66) 2080 3565 Fax: (66) 3846 8978

PT. Mitutoyo Indonesia

Jalan Sriwijaya No.26
Desa cibatu
Kec. Cikarang Selatan
Kab. Bekasi 17530, Indonesia
Tel: (62) 21-2962 8600
Fax: (62) 21-2962 8604
E-mail: ptmi@mitutoyo.co.id

Mitutoyo Vietnam Co., Ltd.

No. 07-TT4, My Dinh - Me Tri Urban Zone,
My Dinh 1 Ward, Nam Tu Liem District,
Hanoi, Vietnam
Tel: (84) 24-3768 8963
Fax: (84) 24-3768 8960
E-mail: mvc@mitutoyo.com.vn

Ho Chi Minh City Branch

Tel: (84) 28-3840 3489
Fax: (84) 28-3840 3498
E-mail: mvc@mitutoyo.com.vn

Mitutoyo Philippines, Inc.

Unit 2103, GMV Building 2,
107 North Main Avenue,
Laguna Technopark, Biñan,
Laguna 4024, Philippines
Tel: (63) 49-544 0272
Fax: (63) 49-544 0272
E-mail: mpi@mitutoyo.com.ph