



An inspection certificate is supplied as standard.  
Refer to page U-11 for details.

# Dial Indicators

Comparison measuring instruments which ensure high quality, high accuracy and reliability.

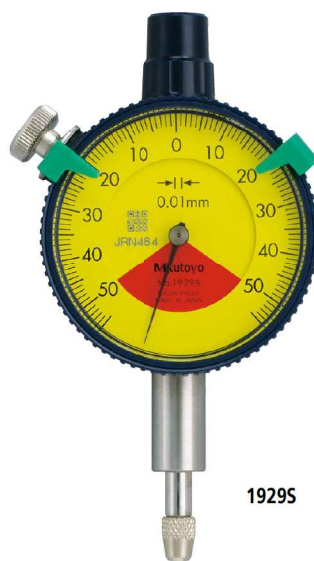
## SERIES 1 — Compact One Revolution Type for Error-free Reading

- Compact dial indicators ideal for restricted-space applications in gaging jigs.
- Mitutoyo's unique shock-proof mechanism is incorporated, providing improved resistance to shock due to sudden spindle retraction caused by impact.
- This series has been developed to eliminate the possibility of reading errors due to miscounting multiple revolutions.
- The dead zone in red indicates "accuracy not guaranteed".
- One revolution type Back Plunger dial gages are also available. (Refer to pages F-55 to F-56 for details)
- All types come with limit markers and a bezel clamp.

One revolution type Back plunger dial gages are also available. (Refer to pages F-55 to F-56 for details.)



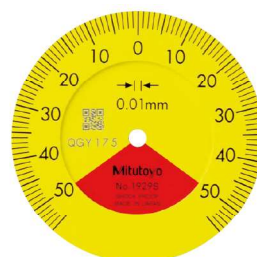
2990T-10



1929S



Balanced scale



Graduation: 0.01 mm,  
Measuring range: 1 mm

1929S

One revolution

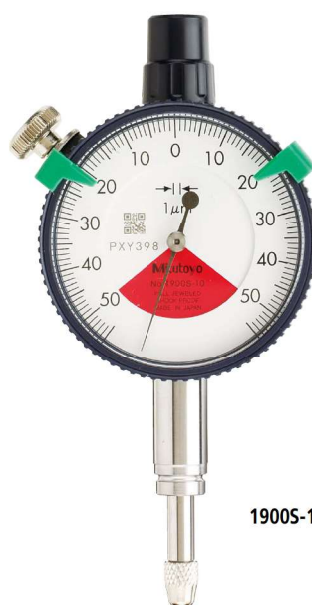
Shockproof

1929S-62

One revolution

Shockproof

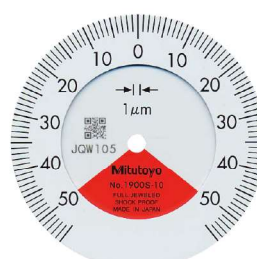
Dustproof



1900S-10



Balanced scale



Graduation: 0.001 mm,  
Measuring range: 0.1 mm

1900S-10

One revolution

Shockproof

Jeweled bearing

1900S-72

One revolution

Shockproof

Dustproof

Jeweled bearing

# Dial Indicators

Comparison measuring instruments which ensure high quality, high accuracy and reliability.

## FEATURES

Metric						
Order No.						
w/lug	Flat-back					
1929S	1929SB	✓	✓			✓
1929S-62	1929SB-62	✓	✓		✓	✓
1900S-10	1900SB-10	✓	✓	✓		✓
1900S-72	1900SB-72	✓	✓	✓	✓	✓

Inch						
Order No.						
w/lug	Flat-back					
1909S-62	1909SB-62	✓	✓		✓	✓
1910S-72	1910SB-72	✓	✓	✓	✓	✓

## SPECIFICATIONS

Metric										ISO/JIS type	
Order No.		Graduation (mm)	Range (range/rev) (mm)	Maximum permissible error (MPE) (μm)				Hysteresis	Repeat-ability	Dial reading	Measuring force (N)
w/lug	Flat-back			Indication error							
				1/10 Rev	1/2 Rev	1 Rev	Measuring range				
1929S	1929SB	0.01	1 (1.4)	7	—	—	11	4	3	50-0-50	1.4 or less
1929S-62	1929SB-62	0.01	1 (1.4)	7	—	—	11	4	3	50-0-50	1.4 or less
1900S-10	1900SB-10	0.001	0.1 (0.14)	2.5	—	—	5	2	1	50-0-50	1.5 or less
1900S-72	1900SB-72	0.001	0.1 (0.14)	2.5	—	—	5	2	1	50-0-50	1.5 or less

Note: Completed products inspection is performed in the vertical orientation (contact point downward) and the stated accuracy is guaranteed.

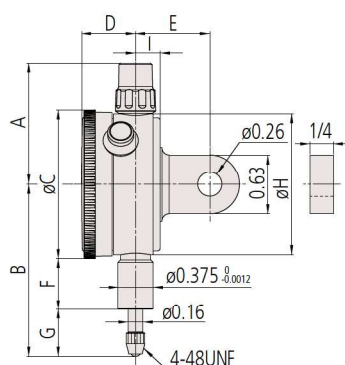
Inch		<div><div></div> ANSI/AGD type</div>							
Order No.		Graduation (in)	Range (range/rev) (in)	Accuracy (in)		Repeat- ability (in)	Dial reading	Measuring force (N)	
w/lug	Flat-back			First 1 Rev/2.5 Rev/10 Rev	Retrace				
1909S-62	1909SB-62	0.0005	0.04 (0.056)	±0.0005/—/—	0.00016	±0.0001	20-0-20	1.4 or less	
1910S-72	1910SB-72	0.0001	0.006 (0.008)	±0.0001/—/—	0.0001	±0.00003	3-0-3	1.5 or less	

Note: Completed products inspection is performed in the vertical orientation (contact point downward) and the stated accuracy is guaranteed.

## DIMENSIONS

ANSI/AGD Type

Unit: in

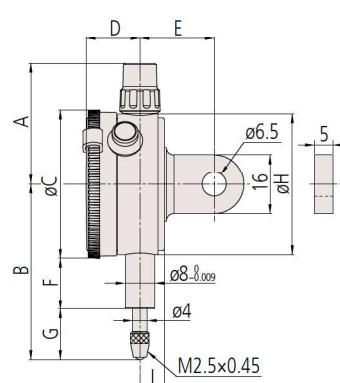


Order No.	A	B	C	D	E	F	G	H	I	Mass (g)	
										w/lug	Flat-back
1909S-62	1.28	1.64	1.57	0.57	0.75	0.50	0.35	1.50	0.26	90	70
1910S-72	1.28	1.61	1.57	0.57	0.75	0.50	0.31	1.50	0.26	90	70

Note: Refer to pages F-57 to F-60 for details of contact points.

ISO/JIS Type

Unit: mm



Order No.	A	B	C	D	E	F	G	H	I	Mass (g)	
										w/lug	Flat-back
1929S	32.5	47.5	40	14.5	20	13.8	13.7	38	6.6	90	70
1929S-62	32.5	47.5	40	14.5	20	13.8	13.7	38	6.6	90	70
1900S-10	32.5	53.5	40	14.5	20	16.8	16.7	38	6.6	95	75
1900S-72	32.5	53.5	40	14.5	20	16.8	16.7	38	6.6	95	75

Note: Refer to pages F-57 to F-60 for details of contact points.