



An inspection certificate is supplied as standard.  
Refer to page U-11 for details.

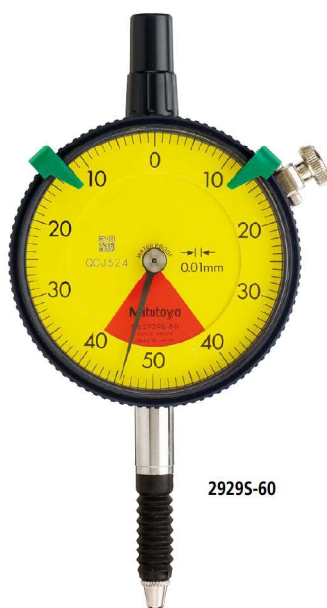
IP64

# Dial Indicators

Comparison measuring instruments which ensure high quality, high accuracy and reliability.

## SERIES 2 — Standard One Revolution Type for Error-free Reading, Waterproof Type

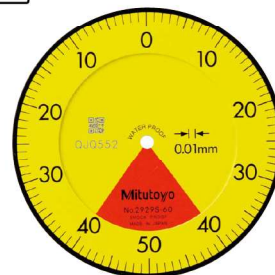
- Mitutoyo's unique shock-proof mechanism is incorporated, providing improved resistance to shock due to sudden spindle retraction caused by impact.
- This series has been developed to eliminate the possibility of reading errors due to miscounting multiple revolutions.
- All types come with limit markers and a bezel clamp.
- The bezel clamp and lifting lever (optional) can be attached to either the right or left side. These parts can be easily installed and removed without tools.
- The stem and spindle are made of high-strength quench-hardened stainless steel suitable for heavy-duty use.
- A carbide contact point is used.
- Application of a hard coating on the surface of the crystal makes the gage highly scratch- and chemical-resistant.
- The dead zone in red indicates "accuracy not guaranteed".



29295-60



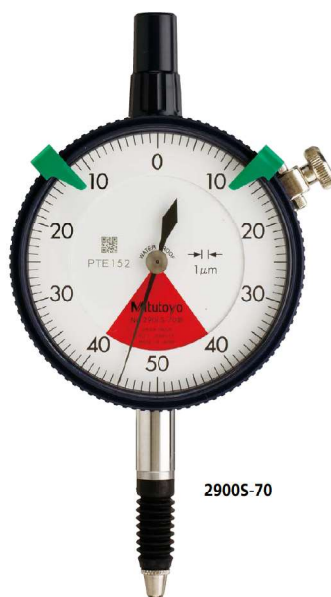
Balanced scale



Graduation: 0.01 mm,  
Measuring range: 0.8 mm

29295-60

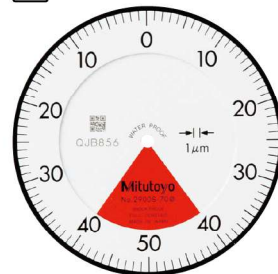
- One revolution
- Shockproof
- Waterproof



29005-70



Balanced scale



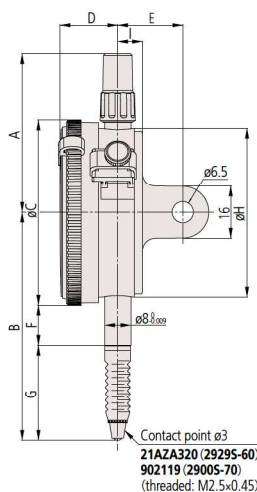
Graduation: 0.001 mm,  
Measuring range: 0.08 mm

29005-70

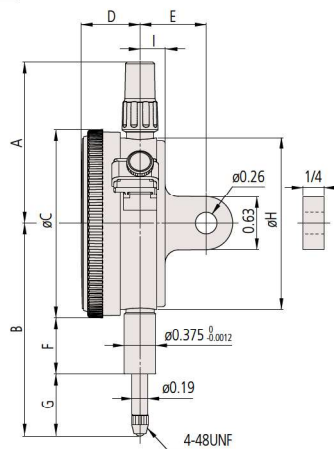
- One revolution
- Shockproof
- Waterproof
- Jeweled bearing

Comparison measuring instruments which ensure high quality, high accuracy and reliability.

ISO / JIS  
Type



Technical drawing of a circular mechanical component, likely a valve or plug, showing dimensions in millimeters. The drawing includes a top view and a side view. The top view shows a circular face with a central hole of diameter 5 mm. The outer diameter is 38.8 mm. The thickness of the component is 10 mm. The side view shows a threaded section with a diameter of 12.8 mm and a length of 30 mm. The component has four mounting holes, each with a diameter of 5 mm, spaced at 30-degree intervals from the center. The bottom view shows a threaded section with a diameter of 12.8 mm and a length of 30 mm.

ANSI / AGD  
Type

Unit: in

Order No.	A	B	C	D	E	F	G	H	I	Mass (g)	
										w/lug	Flat-back
2929S-60	48.8	70	57	17.7	20	12.3	29.2	52	7.6	146	137
2900S-70	48.8	67	57	17.7	20	12.3	26.2	52	7.6	150	141

Note 2: If the contact point of the waterproof model is replaced, the water resistance cannot be guaranteed.

Order No.	A	B	C	D	E	F	G	H	I	Mass (g)	
										w/lug	Flat-back
2910S-72	1.92	2.02	2.24	0.70	3/4	0.54	0.36	2.05	0.30	150	141

Note 2: If the contact point of the waterproof model is replaced, the water resistance cannot be guaranteed.

## Metric







Order No.							
w/lug	Flat-back						
2929S-60	2929SB-60	✓	✓	✓	✓		
2900S-70	2900SB-70	✓	✓	✓	✓		✓

## Metric

Order No.		Graduation (mm)	Range (range/rev) (mm)	Maximum permissible error (MPE) (μm)				Dial reading	Measuring force (N)		
w/lug	Flat-back			Indication error							
				1/10 Rev	1/2 Rev	1 Rev	Measuring range				
2929S-60	2929SB-60	0.01	0.8 (1)	5	—	—	8	3	3	40-0-40	2.0 or less
2900S-70	2900SB-70	0.001	0.08 (0.1)	2	—	—	3	2	0.5	40-0-40	2.0 or less

Note: Completed products inspection is performed in the vertical orientation (contact point downward) and the stated accuracy is guaranteed.

## Inch

Order No.							
w/lug	Flat-back						
2910S-72	2910SB-72	✓	✓	✓		✓	✓

## Inch

Order No.		Graduation (in)	Range (range/rev) (in)	Accuracy (in)		Repeat- ability (in)	Dial reading	Measuring force (N)
				First 1 Rev/2.5 Rev/10 Rev	Retrace			
2910S-72	2910SB-72	0.0001	0.008/0.01	±0.0001/—/—	0.0001	±0.00003	4-0-4	2.5 or less

Note: Completed products inspection is performed in the vertical orientation (contact point downward) and the stated accuracy is guaranteed.