

Loggable Event

- Start and end of measurement
- Recollection/change of measurement data
- Irregular value occurrence
(Out of tolerance, out of management, sequence, tendency, etc.)
- Unmissable causes
- Change of process capability index
(Acceptance to rejection/Rejection to acceptance)

Contents of Call-out Display

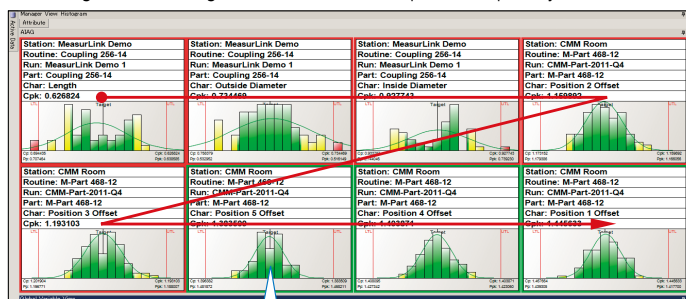
- Station name
(terminal name of each measuring instrument)
 - Inspection procedure
(measuring procedure name for each part)
 - Final revision date/time (data input time, etc.)
 - Measured item information: Displays the designated number of items from the top
 - 1) Inspection record file name*
 - 2) Measurement item*
 - 3) Process capability index*
- * (Cp, Cpk, Pp, Ppk, etc., multiple selection available)
- * Measurement items are sortable
(ascending, descending order)

MeasurLink Process Management for Administrators Process Manager

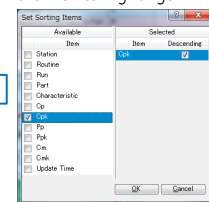
MeasurLink Process Manager enables centralized monitoring of real-time measurement information and checking of detailed information from all **MeasurLink** data collection terminals networked together on the shop floor. Measurement results can be checked in real-time to enable minimizing defects without visiting the shop floor. In addition to simple GO/NG judgments, use of tools such as Manager View, histograms, process capability indexes, etc., make it possible to find abnormal process trends easily.

• Manager View

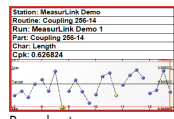
Displays various types of charts as an at-a-glance guide. The administrator can narrow down all items of data currently being measured into a specific monitoring range of those of critical importance or sort those data (in ascending or descending order) on the basis of process capability index.



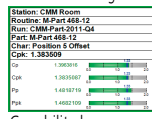
Possible to sort charts in the view and narrow down the monitoring range.



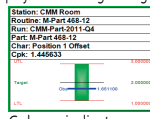
Selects various charts such as run charts and histograms to display as an at-a-glance guide. (Multiple types of charts can be displayed in Manager View.)



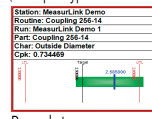
Run chart



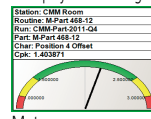
Capability bar



Column indicator



Box plot



Meter

• Global measurement value view

Station	Run	Part	Characteristic	Cp	Cpk	Bar
2016/10/21 10:00:00 MeasurLink Demo	1	Coupling 256-14	Length	0.82824		
2016/10/21 10:00:00 MeasurLink Demo	1	Coupling 256-14	Outside Diameter	0.79484		
2016/10/21 10:00:00 MeasurLink Demo	1	Coupling 256-14	Inside Diameter	0.79771		
2016/10/21 10:00:00 MeasurLink Demo	1	Coupling 256-14	Position 2 Offset	1.00000		
2016/10/21 10:00:00 MeasurLink Demo	1	Coupling 256-14	Position 3 Offset	1.00000		
2016/10/21 10:00:00 MeasurLink Demo	1	Coupling 256-14	Position 4 Offset	1.00000		
2016/10/21 10:00:00 MeasurLink Demo	1	Coupling 256-14	Position 5 Offset	1.00000		
2016/10/21 10:00:00 MeasurLink Demo	1	Coupling 256-14	Position 6 Offset	1.00000		
2016/10/21 10:00:00 MeasurLink Demo	1	Coupling 256-14	Position 7 Offset	1.00000		
2016/10/21 10:00:00 MeasurLink Demo	1	Coupling 256-14	Position 8 Offset	1.00000		
2016/10/21 10:00:00 MeasurLink Demo	1	Coupling 256-14	Position 9 Offset	1.00000		
2016/10/21 10:00:00 MeasurLink Demo	1	Coupling 256-14	Position 10 Offset	1.00000		
2016/10/21 10:00:00 MeasurLink Demo	1	Coupling 256-14	Position 11 Offset	1.00000		
2016/10/21 10:00:00 MeasurLink Demo	1	Coupling 256-14	Position 12 Offset	1.00000		
2016/10/21 10:00:00 MeasurLink Demo	1	Coupling 256-14	Position 13 Offset	1.00000		
2016/10/21 10:00:00 MeasurLink Demo	1	Coupling 256-14	Position 14 Offset	1.00000		
2016/10/21 10:00:00 MeasurLink Demo	1	Coupling 256-14	Position 15 Offset	1.00000		
2016/10/21 10:00:00 MeasurLink Demo	1	Coupling 256-14	Position 16 Offset	1.00000		
2016/10/21 10:00:00 MeasurLink Demo	1	Coupling 256-14	Position 17 Offset	1.00000		
2016/10/21 10:00:00 MeasurLink Demo	1	Coupling 256-14	Position 18 Offset	1.00000		
2016/10/21 10:00:00 MeasurLink Demo	1	Coupling 256-14	Position 19 Offset	1.00000		
2016/10/21 10:00:00 MeasurLink Demo	1	Coupling 256-14	Position 20 Offset	1.00000		

Displays bar graphs that can determine good or bad process capability indexes at a glance. This allows the administrator to sort all current measurement data (in ascending or descending order) on the basis of process capability index, measurement date and time, part name, etc.

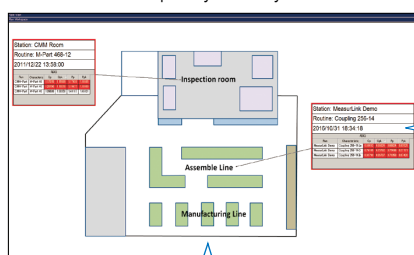
• Log view

Displays various types of events that occur during measurement. This allows the administrator to grasp the state of measurement operation (measurement start/termination, etc.) and the occurrence of an abnormal event (out-of-tolerance, etc.) for all current measurement data.

TimeStamp	Station	User	Run	Description	Characteristic	Observation Number	Observation	Assemble Cause	Corrective Action
2016/10/21 10:00:00	MeasurLink Demo	N/A	Coupling 256-14	Data Modified	Outside Diameter	49	0.991		
2016/10/21 10:00:00	MeasurLink Demo	N/A	Coupling 256-14	Data Modified	Inside Diameter	50	0.991		
2016/10/21 10:00:00	MeasurLink Demo	N/A	Coupling 256-14	Data Modified	Position 2 Offset	51	0.991		
2016/10/21 10:00:00	MeasurLink Demo	N/A	Coupling 256-14	Data Modified	Position 3 Offset	52	0.991		
2016/10/21 10:00:00	MeasurLink Demo	N/A	Coupling 256-14	Data Modified	Position 4 Offset	53	0.991		
2016/10/21 10:00:00	MeasurLink Demo	N/A	Coupling 256-14	Data Modified	Position 5 Offset	54	0.991		
2016/10/21 10:00:00	MeasurLink Demo	N/A	Coupling 256-14	Data Modified	Position 6 Offset	55	0.991		
2016/10/21 10:00:00	MeasurLink Demo	N/A	Coupling 256-14	Data Modified	Position 7 Offset	56	0.991		
2016/10/21 10:00:00	MeasurLink Demo	N/A	Coupling 256-14	Data Modified	Position 8 Offset	57	0.991		
2016/10/21 10:00:00	MeasurLink Demo	N/A	Coupling 256-14	Data Modified	Position 9 Offset	58	0.991		
2016/10/21 10:00:00	MeasurLink Demo	N/A	Coupling 256-14	Data Modified	Position 10 Offset	59	0.991		
2016/10/21 10:00:00	MeasurLink Demo	N/A	Coupling 256-14	Data Modified	Position 11 Offset	60	0.991		
2016/10/21 10:00:00	MeasurLink Demo	N/A	Coupling 256-14	Data Modified	Position 12 Offset	61	0.991		
2016/10/21 10:00:00	MeasurLink Demo	N/A	Coupling 256-14	Data Modified	Position 13 Offset	62	0.991		
2016/10/21 10:00:00	MeasurLink Demo	N/A	Coupling 256-14	Data Modified	Position 14 Offset	63	0.991		
2016/10/21 10:00:00	MeasurLink Demo	N/A	Coupling 256-14	Data Modified	Position 15 Offset	64	0.991		
2016/10/21 10:00:00	MeasurLink Demo	N/A	Coupling 256-14	Data Modified	Position 16 Offset	65	0.991		
2016/10/21 10:00:00	MeasurLink Demo	N/A	Coupling 256-14	Data Modified	Position 17 Offset	66	0.991		
2016/10/21 10:00:00	MeasurLink Demo	N/A	Coupling 256-14	Data Modified	Position 18 Offset	67	0.991		
2016/10/21 10:00:00	MeasurLink Demo	N/A	Coupling 256-14	Data Modified	Position 19 Offset	68	0.991		
2016/10/21 10:00:00	MeasurLink Demo	N/A	Coupling 256-14	Data Modified	Position 20 Offset	69	0.991		
2016/10/21 10:00:00	MeasurLink Demo	N/A	Coupling 256-14	Data Modified	Position 21 Offset	70	0.991		
2016/10/21 10:00:00	MeasurLink Demo	N/A	Coupling 256-14	Data Modified	Position 22 Offset	71	0.991		
2016/10/21 10:00:00	MeasurLink Demo	N/A	Coupling 256-14	Data Modified	Position 23 Offset	72	0.991		
2016/10/21 10:00:00	MeasurLink Demo	N/A	Coupling 256-14	Data Modified	Position 24 Offset	73	0.991		
2016/10/21 10:00:00	MeasurLink Demo	N/A	Coupling 256-14	Data Modified	Position 25 Offset	74	0.991		
2016/10/21 10:00:00	MeasurLink Demo	N/A	Coupling 256-14	Data Modified	Position 26 Offset	75	0.991		
2016/10/21 10:00:00	MeasurLink Demo	N/A	Coupling 256-14	Data Modified	Position 27 Offset	76	0.991		
2016/10/21 10:00:00	MeasurLink Demo	N/A	Coupling 256-14	Data Modified	Position 28 Offset	77	0.991		
2016/10/21 10:00:00	MeasurLink Demo	N/A	Coupling 256-14	Data Modified	Position 29 Offset	78	0.991		
2016/10/21 10:00:00	MeasurLink Demo	N/A	Coupling 256-14	Data Modified	Position 30 Offset	79	0.991		
2016/10/21 10:00:00	MeasurLink Demo	N/A	Coupling 256-14	Data Modified	Position 31 Offset	80	0.991		
2016/10/21 10:00:00	MeasurLink Demo	N/A	Coupling 256-14	Data Modified	Position 32 Offset	81	0.991		
2016/10/21 10:00:00	MeasurLink Demo	N/A	Coupling 256-14	Data Modified	Position 33 Offset	82	0.991		
2016/10/21 10:00:00	MeasurLink Demo	N/A	Coupling 256-14	Data Modified	Position 34 Offset	83	0.991		
2016/10/21 10:00:00	MeasurLink Demo	N/A	Coupling 256-14	Data Modified	Position 35 Offset	84	0.991		
2016/10/21 10:00:00	MeasurLink Demo	N/A	Coupling 256-14	Data Modified	Position 36 Offset	85	0.991		
2016/10/21 10:00:00	MeasurLink Demo	N/A	Coupling 256-14	Data Modified	Position 37 Offset	86	0.991		
2016/10/21 10:00:00	MeasurLink Demo	N/A	Coupling 256-14	Data Modified	Position 38 Offset	87	0.991		
2016/10/21 10:00:00	MeasurLink Demo	N/A	Coupling 256-14	Data Modified	Position 39 Offset	88	0.991		
2016/10/21 10:00:00	MeasurLink Demo	N/A	Coupling 256-14	Data Modified	Position 40 Offset	89	0.991		
2016/10/21 10:00:00	MeasurLink Demo	N/A	Coupling 256-14	Data Modified	Position 41 Offset	90	0.991		
2016/10/21 10:00:00	MeasurLink Demo	N/A	Coupling 256-14	Data Modified	Position 42 Offset	91	0.991		
2016/10/21 10:00:00	MeasurLink Demo	N/A	Coupling 256-14	Data Modified	Position 43 Offset	92	0.991		
2016/10/21 10:00:00	MeasurLink Demo	N/A	Coupling 256-14	Data Modified	Position 44 Offset	93	0.991		
2016/10/21 10:00:00	MeasurLink Demo	N/A	Coupling 256-14	Data Modified	Position 45 Offset	94	0.991		
2016/10/21 10:00:00	MeasurLink Demo	N/A	Coupling 256-14	Data Modified	Position 46 Offset	95	0.991		
2016/10/21 10:00:00	MeasurLink Demo	N/A	Coupling 256-14	Data Modified	Position 47 Offset	96	0.991		
2016/10/21 10:00:00	MeasurLink Demo	N/A	Coupling 256-14	Data Modified	Position 48 Offset	97	0.991		
2016/10/21 10:00:00	MeasurLink Demo	N/A	Coupling 256-14	Data Modified	Position 49 Offset	98	0.991		
2016/10/21 10:00:00	MeasurLink Demo	N/A	Coupling 256-14	Data Modified	Position 50 Offset	99	0.991		
2016/10/21 10:00:00	MeasurLink Demo	N/A	Coupling 256-14	Data Modified	Position 51 Offset	100	0.991		

• Plant view

Displays a process capability index for each measuring instrument on the plant layout drawing. This allows the administrator to quickly identify the location where an abnormality has occurred.



Displays graphics files (bmp, jpg, gif, png) in the plant layout drawing in the background.

Call-out boxes with a leader can be arranged on an instrument-by-instrument (station-by-station) basis in conformity with the plant layout drawing in the background.

Call-out for each station

Station	Run	Characteristic	Cp	Cpk	Pp	Ppk
MeasurLink Demo	Coupling 256-14	0.82824	0.79484	0.79771	0.79771	0.79771
MeasurLink Demo	Coupling 256-14	0.82824	0.79484	0.79771	0.79771	0.79771
MeasurLink Demo	Coupling 256-14	0.82824	0.79484	0.79771	0.79771	0.79771

