

3 Spiral Pointed Tap Series for through hole

Overall length	Thread length	Thread + Neck length	Shank length	Shank dia.	Size of square	Length of square
L	ℓ	ℓn	ℓs	Ds	K	ℓk

JIS

1 Spiral Fluted Taps (for blind hole)

2 Spiral Fluted Taps (for through hole)

3 Spiral Pointed Taps (for through hole)

4 Hand Taps

5 Cemented Carbide Taps

6 Roll Taps

7 Special Thread Taps (Simple Inspection Tools)

8 Pipe Taps

9 Thread Mills

10 Dies

11 Center Drills (Centering Tools)

JIS

3-55

JIS

SU+PO/SU-PO

Spiral Pointed Taps for Stainless Steels



Specification



Product Name and Size.

SU+PO	~M2.6
SU-PO	M3~, all U, all W

Recommended Tapping Speeds depending on Materials

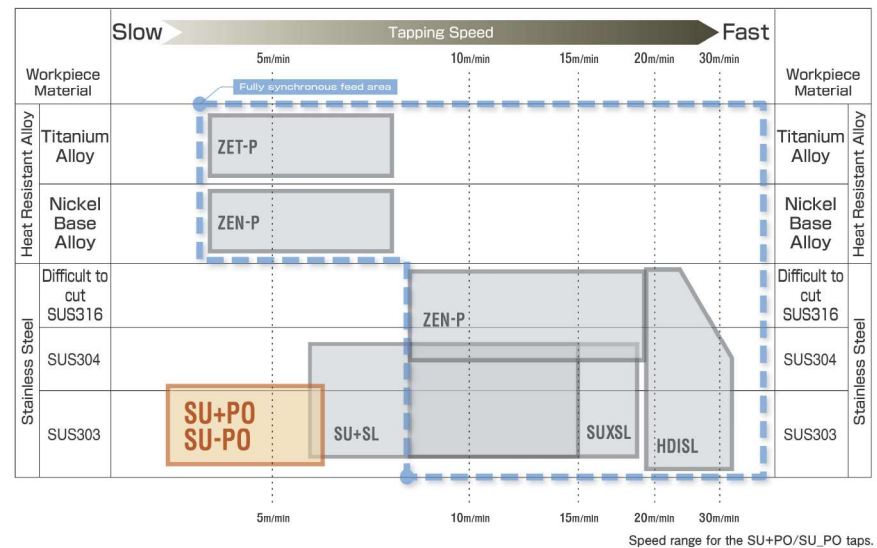
Low carbon steels 低炭素鋼 ~10 (m/min)	Medium carbon steels 中炭素鋼 ~10 (m/min)	High carbon steels 高炭素鋼 ~10 (m/min)	Alloy steels 合金鋼 ~10 (m/min)	Stainless steels ステンレス鋼 ~10 (m/min)
--	---	---	------------------------------------	--

For icon explanation, refer to icon-1

Product features

- The SU+PO/SU-PO taps are designed for stainless steel that causes work harden easily. The cutting geometry is also suited for tapping through holes in chromium steel and molybdenum steel.
- To prevent chip welding, the tap's surface is oxidized.

Comparison chart



Speed range for the SU+PO/SU-PO taps.

Think threads with YAMAWA

For improvement, spec may change without advance notice.

Overall length	Thread length	Thread + Neck length	Shank length	Shank dia.	Size of square	Length of square
L	ℓ	ℓn	ℓs	Ds	K	ℓk

3

JIS

1 Spiral Fluted Taps (for blind hole)

2 Spiral Fluted Taps (for through hole)

3 Spiral Pointed Taps (for through hole)

4 Hand Taps

5 Cemented Carbide Taps

6 Roll Taps

7 Special Thread Taps (Simple Inspection Tools)

8 Pipe Taps

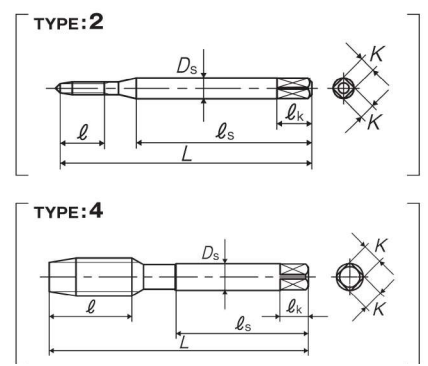
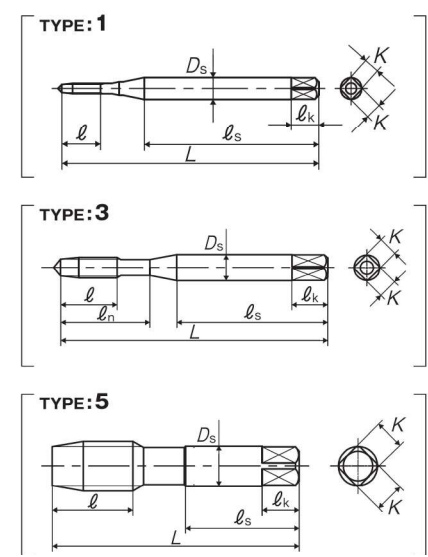
9 Thread Mills

10 Dies

11 Center Drills (Centering Tools)

JIS

3-56



Segment: 1E

Size	Class	Code	Chamfer	L (mm)	ℓ (mm)	ℓn (mm)	ℓs (mm)	Ds (mm)	K (mm)	ℓk (mm)	No. of flutes	TYPE	MSRP
For Metric Threads													
M1.4 × 0.3	P1	PUPP1.4C	5P	36	5.4	-	24	3	2.5	5	2	1	¥ 3,250*
M1.6 × 0.35	P2	PUPQ1.6D	5P	36	6.3	-	24	3	2.5	5	2	2	¥ 3,100*
M1.7 × 0.35	P2	PUPQ1.7D	5P	36	6.3	-	24	3	2.5	5	2	2	¥ 3,100*
M2 × 0.4	P2	PUPQ2.0E	5P	42	7.2	12	27	3	2.5	5	2	3	¥ 2,480
M2 × 0.4	P3	PUPR2.0E	5P	42	7.2	12	27	3	2.5	5	2	3	¥ 2,480*
M2.3 × 0.4	P2	PUPQ2.3E	5P	42	7.2	12	27	3	2.5	5	2	3	¥ 2,260*
M2.3 × 0.4	P3	PUPR2.3E	5P	42	7.2	12	27	3	2.5	5	2	3	¥ 2,260*
M2.5 × 0.45	P2	PUPQ2.5F	5P	46	8.1	14	29	3	2.5	5	2	3	¥ 1,900
M2.5 × 0.45	P3	PUPR2.5F	5P	46	8.1	14	29	3	2.5	5	2	3	¥ 1,900*
M2.6 × 0.45	P2	PUPQ2.6F	5P	46	8.1	14	29	3	2.5	5	2	3	¥ 1,900
M2.6 × 0.45	P3	PUPR2.6F	5P	46	8.1	14	29	3	2.5	5	2	3	¥ 1,900*
M3 × 0.5	P2	PUMQ3.0G	5P	46	9	14	26	4	3.2	6	3	3	¥ 1,330
M3 × 0.5	P3	PUMR3.0G	5P	46	9	14	26	4	3.2	6	3	3	¥ 1,330*
M3 × 0.5	P4	PUMS3.0G	5P	46	9	14	26	4	3.2	6	3	3	¥ 1,330*
3M0.6	P2	PUMQ3.0H	5P	46	9	14	26	4	3.2	6	3	3	¥ 1,330*
M3.5 × 0.6	P2	PUMQ3.5H	5P	52	11	16	29	5	4	7	3	3	¥ 1,330
M4 × 0.7	P2	PUMQ4.0I	5P	52	11	17	29	5	4	7	3	3	¥ 1,330
M4 × 0.7	P3	PUMR4.0I	5P	52	11	17	29	5	4	7	3	3	¥ 1,330*
M4 × 0.7	P4	PUMS4.0I	5P	52	11	17	29	5	4	7	3	3	¥ 1,330*
4M0.75	P2	PUMQ4.0J	5P	52	11	17	29	5	4	7	3	3	¥ 1,330*
M5 × 0.8	P2	PUMQ5.0K	5P	60	13	22	33	5.5	4.5	7	3	3	¥ 1,340
M5 × 0.8	P3	PUMR5.0K	5P	60	13	22	33	5.5	4.5	7	3	3	¥ 1,340*
M5 × 0.8	P4	PUMS5.0K	5P	60	13	22	33	5.5	4.5	7	3	3	¥ 1,340*
5M0.9	P2	PUMQ5.0L	5P	60	13	22	33	5.5	4.5	7	3	3	¥ 1,340*

* = Specified Distribution Items. Made to order products. For improvement, spec may change without advance notice.

Think threads with YAMAWA

3 Spiral Pointed Tap Series for through hole

Overall length	Thread length	Thread + Neck length	Shank length	Shank dia.	Size of square	Length of square
L	ℓ	ℓn	ℓs	Ds	K	ℓk

JIS

SU+PO/SU-PO Spiral Pointed Taps for Stainless Steels

Size	Class	Code	Chamfer	L (mm)	ℓ (mm)	ℓn (mm)	ℓs (mm)	Ds (mm)	K (mm)	ℓk (mm)	No. of flutes	TYPE	MSRP
M6 × 1	P2	PUM06.0M	5P	62	15	26	33	6	4.5	7	3	3	¥ 1,480
M6 × 1	P3	PUMR6.0M	5P	62	15	26	33	6	4.5	7	3	3	¥ 1,480*
M6 × 1	P4	PUMS6.0M	5P	62	15	26	33	6	4.5	7	3	3	¥ 1,480*
M6 × 0.75	P2	PUM06.0J	5P	62	15	26	33	6	4.5	7	3	3	¥ 2,070*
M7 × 1	P2	PUM07.0M	5P	70	19	-	36	6.2	5	8	3	4	¥ 1,800*
M8 × 1.25	P3	PUMR8.0N	5P	70	19	-	36	6.2	5	8	3	4	¥ 2,060
M8 × 1.25	P4	PUMS8.0N	5P	70	19	-	36	6.2	5	8	3	4	¥ 2,060*
M8 × 1.25	P5	PUMT8.0N	5P	70	19	-	36	6.2	5	8	3	4	¥ 2,060*
M8 × 1	P3	PUMR8.0M	5P	70	19	-	36	6.2	5	8	3	4	¥ 2,340
M10 × 1.5	P3	PUMR0100	5P	75	23	-	38	7	5.5	8	3	4	¥ 2,630
M10 × 1.5	P4	PUMS0100	5P	75	23	-	38	7	5.5	8	3	4	¥ 2,630*
M10 × 1.5	P5	PUMT0100	5P	75	23	-	38	7	5.5	8	3	4	¥ 2,630*
M10 × 1.25	P3	PUMR010N	5P	75	23	-	38	7	5.5	8	3	4	¥ 2,630
M10 × 1.25	P4	PUMS010N	5P	75	23	-	38	7	5.5	8	3	4	¥ 2,630*
M10 × 1	P3	PUMR010M	5P	75	23	-	38	7	5.5	8	3	4	¥ 3,120*
M12 × 1.75	P4	PUMS012P	5P	82	26	-	42	8.5	6.5	9	3	4	¥ 3,720
M12 × 1.75	P5	PUMT012P	5P	82	26	-	42	8.5	6.5	9	3	4	¥ 3,720*
M12 × 1.5	P3	PUMR012P	5P	82	26	-	42	8.5	6.5	9	3	4	¥ 3,720*
M12 × 1.5	P5	PUMT0120	5P	82	26	-	42	8.5	6.5	9	3	4	¥ 3,720*
M12 × 1.25	P4	PUMS012N	5P	82	26	-	42	8.5	6.5	9	3	4	¥ 3,720
M12 × 1.25	P5	PUMT012N	5P	82	26	-	42	8.5	6.5	9	3	4	¥ 3,720*
M12 × 1	P3	PUMR012M	5P	82	26	-	42	8.5	6.5	9	3	4	¥ 4,370*
M14 × 2	P4	PUMS014Q	5P	88	26	-	45	10.5	8	11	3	4	¥ 5,080
M14 × 2	P5	PUMT014Q	5P	88	26	-	45	10.5	8	11	3	4	¥ 5,080*
M14 × 1.5	P3	PUMR0140	5P	88	26	-	45	10.5	8	11	3	4	¥ 5,080
M14 × 1.5	P5	PUMT0140	5P	88	26	-	45	10.5	8	11	3	4	¥ 5,080*
M14 × 1	P3	PUMR014M	5P	88	26	-	45	10.5	8	11	3	4	¥ 5,890*
M15 × 1.5	P3	PUMR0150	5P	95	26	-	48	12.5	10	13	3	4	¥ 6,780*
M15 × 1	P3	PUMR015M	5P	95	26	-	48	12.5	10	13	3	4	¥ 8,080*
M16 × 2	P4	PUMS016Q	5P	95	26	-	48	12.5	10	13	3	4	¥ 6,780*
M16 × 2	P5	PUMT016Q	5P	95	26	-	48	12.5	10	13	3	4	¥ 6,780*
M16 × 2	P6	PUMU016Q	5P	95	26	-	48	12.5	10	13	3	4	¥ 6,780*
M16 × 1.5	P3	PUMR0160	5P	95	26	-	48	12.5	10	13	3	4	¥ 6,780
M16 × 1.5	P5	PUMT0160	5P	95	26	-	48	12.5	10	13	3	4	¥ 6,780*
M16 × 1	P3	PUMR016M	5P	95	26	-	48	12.5	10	13	3	4	¥ 8,080*
M18 × 2.5	P4	PUMS018R	5P	100	33	-	51	14	11	14	3	4	¥ 9,060*
M18 × 2.5	P5	PUMT018R	5P	100	33	-	51	14	11	14	3	4	¥ 9,060*
M18 × 2.5	P6	PUMU018R	5P	100	33	-	51	14	11	14	3	4	¥ 9,060*
M18 × 1.5	P4	PUMS0180	5P	100	33	-	51	14	11	14	3	4	¥ 9,060*
M18 × 1.5	P5	PUMT0180	5P	100	33	-	51	14	11	14	3	4	¥ 9,060*
M20 × 2.5	P4	PUMS020R	5P	105	33	-	50	15	12	15	3	5	¥ 12,400
M20 × 2.5	P5	PUMT020R	5P	105	33	-	50	15	12	15	3	5	¥ 12,400*
M20 × 2.5	P6	PUMU020R	5P	105	33	-	50	15	12	15	3	5	¥ 12,400*
M20 × 1.5	P4	PUMS0200	5P	105	33	-	50	15	12	15	3	5	¥ 12,400*
M20 × 1.5	P5	PUMT0200	5P	105	33	-	50	15	12	15	3	5	¥ 12,400*
M22 × 2.5	P4	PUMS022R	5P	115	33	-	55	17	13	16	3	5	¥ 15,800*
M22 × 2.5	P5	PUMT022R	5P	115	33	-	55	17	13	16	3	5	¥ 15,800*
M22 × 2.5	P6	PUMU022R	5P	115	33	-	55	17	13	16	3	5	¥ 15,800*
M22 × 1.5	P4	PUMS0220	5P	115	33	-	55	17	13	16	3	5	¥ 15,800*
M22 × 1.5	P5	PUMT0220	5P	115	33	-	55	17	13	16	3	5	¥ 15,800*

JIS
3-57

Think threads with **YAMAWA**
* = Specified Distribution Items. Made to order products.
For improvement, spec may change without advance notice.

Overall length	Thread length	Thread + Neck length	Shank length	Shank dia.	Size of square	Length of square
L	ℓ	ℓn	ℓs	Ds	K	ℓk

3

JIS

SU+PO/SU-PO Spiral Pointed Taps for Stainless Steels

Size	Class	Code	Chamfer	L (mm)	ℓ (mm)	ℓn (mm)	ℓs (mm)	Ds (mm)	K (mm)	ℓk (mm)	No. of flutes	TYPE	MSRP
M24 × 3	P4	PUMS024S	5P	120	39	-	55	19	15	18	3	5	¥ 19,700
M24 × 3	P5	PUMT024S	5P	120	39	-	55	19	15	18	3	5	¥ 19,700*
M24 × 3	P6	PUMU024S	5P	120	39	-	55	19	15	18	3	5	¥ 19,700*
M24 × 1.5	P4	PUMS0240	5P	120	39	-	55	19	15	18	3	5	¥ 19,700*
M27 × 3	P4	PUMS027S	5P	130	39	-	60	20	15	18	4	5	¥ 27,900*
M27 × 1.5	P4	PUMS0270	5P	130	39	-	60	20	15	18	4	5	¥ 27,900*
M30 × 3.5	P5	PUMT030T	5P	135	46	-	62	23	17	20	4	5	¥ 35,600*
M30 × 1.5	P4	PUMS0300	5P	135	46	-	62	23	17	20	4	5	¥ 35,600*
M33 × 3.5	P5	PUMT033T	5P	145	46	-	67	25	19	22	4	5	¥ 41,400*
M36 × 4	P5	PUMT036U	5P	155	52	-	71	28	21	24	4	5	¥ 48,000*
M39 × 4	P5	PUMT039U	5P	165	52	-	76	30	23	26	4	5	¥ 55,000*
M42 × 4.5	P5	PUMT042V	5P	175	59	-	81	32	26	30	4	5	¥ 66,900*
For Unified Threads													
No.2-56UNC	P1	PUMPUN2E	5P	42	8.1	12	27	3	2.5	5	2	3	¥ 2,590*
No.4-40UNC	P2	PUMQUN4H	5P	46	9	14	25	4	3.2	6	2	3	¥ 1,670*
No.4-48UNF	P1	PUMQUN4F	5P	46	9	14	25	4	3.2	6	2	3	¥ 1,670*
No.5-40UNC	P2	PUMQUN5H	5P	52	11	16	28	5	4	7	3	3	¥ 1,560*
No.5-44UNF	P1	PUMQUN5C	5P	52	11	16	28	5	4	7	3	3	¥ 1,560*
No.6-32UNC	P2	PUMQUN6J	5P	52	11	17	27	5	4	7	3	3	¥ 1,560*
No.6-40UNF	P2	PUMQUN6H	5P	52	11	17	27	5	4	7	3	3	¥ 1,560*
No.8-32UNC	P2	PUMQUN8J	5P	60	13	22	31	5.5	4.5	7	3	3	¥ 1,570*
No.8-36UNF	P2	PUMQUN8I	5P	60	13	22	31	5.5	4.5	7	3	3	¥ 1,600*
No.10-24UNC	P2	PUMQUNAM	5P	60	13	22	32	5.5	4.5	7	3	3	¥ 1,600*
No.10-32UNF	P2	PUMQUNAJ	5P	60	13	22	32	5.5	4.5	7	3	3	¥ 1,600*
1/4-20UNC	P2	PUMQU04N	5P	62	15	26	33	6	4.5	7	3	3	¥ 1,700*
1/4-28UNF	P2	PUMQU04K	5P	62	15	26	33	6	4.5	7	3	3	¥ 1,700*
5/16-18UNC	P3	PUMRU050	5P	70	19	-	36	6.2	5	8	3	4	¥ 2,370*
5/16-24UNF	P2	PUMQU05M	5P	70	19	-	36	6.2	5	8	3	4	¥ 2,370*
3/8-16UNC	P3	PUMRU06P	5P	75	23	-	38	7	5.5	8	3	4	¥ 3,040*
3/8-24UNF	P2	PUMQU06M	5P	75	23	-	38	7	5.5	8	3	4	¥ 3,040*
7/16-14UNC	P3	PUMRU070	5P	82	26	-	42	8.5	6.5	9	3	4	¥ 4,280*
7/16-20UNF	P3	PUMRU07N	5P	82	26	-	42	8.5	6.5	9	3	4	¥ 4,280*
1/2-13UNC	P3	PUMRU08R	5P	88	26	-	45	10.5	8	11	3	4	¥ 4,550*
1/2-20UNF	P3	PUMRU08N	5P	88	26	-	45	10.5	8	11	3	4	¥ 4,550*
9/16-18UNF	P3	PUMRU090	5P	95	26	-	48	12.5	10	13	3	4	¥ 6,780*
5/8-11UNC	P3	PUMRU10U	5P	95	26	-	48	12.5	10	13	3	4	¥ 6,780*
For Whitworth Threads													
3/16W24	P2	PUMQW03M	5P	60	13	21	33	5.5	4.5	7	3	3	¥ 1,570*
1/4W20	P3	PUMRW04N	5P	62	15	26	33	6	4.5	7	3	3	¥ 1,680*
5/16W18	P3	PUMRW050	5P	70	19	-	36	6.2	5	8	3	4	¥ 2,370*
3/8W16	P3	PUMRW06P	5P	75	23	-	38	7	5.5	8	3	4	¥ 3,040*
7/16W14	P3	PUMRW070	5P	82	26	-	42	8.5	6.5	9	3	4	¥ 4,200*
1/2W12	P3	PUMRW08S	5P	88	26	-	45	10.5	8	11	3	4	¥ 4,550*
5/8W11	P3	PUMRW10U	5P	95	26	-	48	12.5	10	13	3	4	¥ 6,780*
3/4W10	P4	PUMSW12V	5P	105	33	-	50	15	12	15	3	5	¥ 12,400*
1 W8	P4	PUMSW16X	5P	125	39	-	58	19	15	18	3	5	¥ 25,900*

JIS
3-58

Think threads with **YAMAWA**
* = Specified Distribution Items. Made to order products.
For improvement, spec may change without advance notice.