

Spiral Fluted Tap Series for blind hole

Overall length	Thread length	Tread + Neck length	Shank length	Shank dia.	Size of square	Length of square
L	ℓ	ℓn	ℓs	Ds	K	ℓk

1

JIS

Spiral Fluted Taps (for blind hole)

Spiral Fluted Taps (for through hole)

Spiral Pointed Taps (for through hole)

Hand Taps

Cemented Carbide Taps

Roll Taps

Special Thread Taps (Simple Inspection Tools)

Pipe Taps

Thread Mills

Dies

Center Drills (Centering Tools)

JIS 1-66



LS-SP

Long Shank Spiral Fluted Taps

Specification

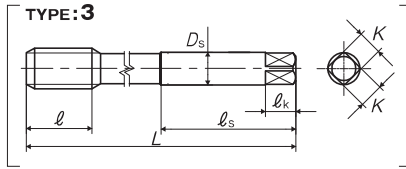
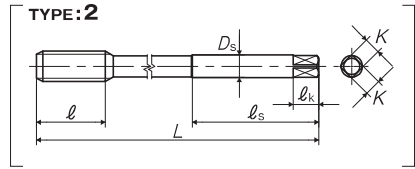
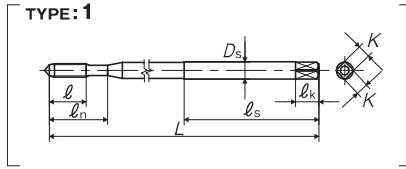


Recommended Tapping Speeds depending on Materials

Medium carbon steels 中炭素鋼	High carbon steels 高炭素鋼
5~10 (m/min)	5~10 (m/min)

For icon explanation, refer to icon-1

■ The LS-SP is a long shank spiral flute tap capable of deep hole threading.



Segment: 1C

Size	Class	Code	Chamfer	L (mm)	ℓ (mm)	ℓn (mm)	ℓs (mm)	Ds (mm)	K (mm)	ℓk (mm)	No. of flutes	TYPE	MSRP
For Metric Threads													
M2 × 0.4	P1	SPP2.0EL07	2.5P	70	7.2	12	55	3	2.5	5	2	1	¥ 3,720*
M2.3 × 0.4	P1	SPP2.3EL07	2.5P	70	7.2	12	55	3	2.5	5	2	1	¥ 3,340*
M2.5 × 0.45	P1	SPP2.5FL07	2.5P	70	8.1	14	53	3	2.5	5	2	1	¥ 2,930*
M2.6 × 0.45	P1	SPP2.6FL07	2.5P	70	8.1	14	53	3	2.5	5	2	1	¥ 2,930*
M3 × 0.5	P1	SPP3.0GL07	2.5P	70	9	14	50	4	3.2	6	3	1	¥ 2,280*
M3 × 0.5	P1	SPP3.0GL10	2.5P	100	9	14	40	4	3.2	6	3	1	¥ 3,310
M3 × 0.5	P1	SPP3.0GL12	2.5P	120	9	14	40	4	3.2	6	3	1	¥ 3,970*
M3 × 0.5	P1	SPP3.0GL15	2.5P	150	9	14	40	4	3.2	6	3	1	¥ 6,240
M3 × 0.5	P2	SPQ3.0GL10	2.5P	100	9	14	40	4	3.2	6	3	1	¥ 3,310*
M3 × 0.5	P2	SPQ3.0GL15	2.5P	150	9	14	40	4	3.2	6	3	1	¥ 6,240*
M3 × 0.5	P3	SPR3.0GL10	2.5P	100	9	14	40	4	3.2	6	3	1	¥ 3,310*
M3 × 0.5	P3	SPR3.0GL15	2.5P	150	9	14	40	4	3.2	6	3	1	¥ 6,240*
M4 × 0.7	P2	SPQ4.0IL07	2.5P	70	11	17	47	5	4	7	3	1	¥ 1,990*
M4 × 0.7	P2	SPQ4.0IL10	2.5P	100	11	17	40	5	4	7	3	1	¥ 3,020
M4 × 0.7	P2	SPQ4.0IL12	2.5P	120	11	17	40	5	4	7	3	1	¥ 3,740*
M4 × 0.7	P2	SPQ4.0IL15	2.5P	150	11	17	40	5	4	7	3	1	¥ 5,770
M4 × 0.7	P3	SPR4.0IL10	2.5P	100	11	17	40	5	4	7	3	1	¥ 3,020*
M4 × 0.7	P3	SPR4.0IL15	2.5P	150	11	17	40	5	4	7	3	1	¥ 5,770*
M5 × 0.8	P2	SPQ5.0KL10	2.5P	100	13	22	40	5.5	4.5	7	3	1	¥ 2,650
M5 × 0.8	P2	SPQ5.0KL12	2.5P	120	13	22	40	5.5	4.5	7	3	1	¥ 3,300*
M5 × 0.8	P2	SPQ5.0KL15	2.5P	150	13	22	40	5.5	4.5	7	3	1	¥ 4,480
M5 × 0.8	P3	SPR5.0KL10	2.5P	100	13	22	40	5.5	4.5	7	3	1	¥ 2,650*
M5 × 0.8	P3	SPR5.0KL15	2.5P	150	13	22	40	5.5	4.5	7	3	1	¥ 4,480*

* = Specified Distribution Items, Made to order products. For improvement, spec may change without advance notice.



1

JIS

Spiral Fluted Taps (for blind hole)

Spiral Fluted Taps (for through hole)

Spiral Pointed Taps (for through hole)

Hand Taps

Cemented Carbide Taps

Roll Taps

Special Thread Taps (Simple Inspection Tools)

Pipe Taps

Thread Mills

Dies

Center Drills (Centering Tools)

JIS 1-67

Spiral Fluted Tap Series for blind hole

Overall length	Thread length	Tread + Neck length	Shank length	Shank dia.	Size of square	Length of square
L	ℓ	ℓn	ℓs	Ds	K	ℓk

LS-SP Long Shank Spiral Fluted Taps

Size	Class	Code	Chamfer	L (mm)	ℓ (mm)	ℓn (mm)	ℓs (mm)	Ds (mm)	K (mm)	ℓk (mm)	No. of flutes	TYPE	MSRP
M6 × 1	P2	SPQ6.0ML10	2.5P	100	15	26	40	6	4.5	7	3	1	¥ 2,260
M6 × 1	P2	SPQ6.0ML12	2.5P	120	15	26	40	6	4.5	7	3	1	¥ 2,910*
M6 × 1	P2	SPQ6.0ML15	2.5P	150	15	26	40	6	4.5	7	3	1	¥ 4,000
M6 × 1	P2	SPQ6.0ML20	2.5P	200	15	26	40	6	4.5	7	3	1	¥ 5,530*
M6 × 1	P3	SPR6.0ML10	2.5P	100	15	26	40	6	4.5	7	3	1	¥ 2,260*
M6 × 1	P3	SPR6.0ML15	2.5P	150	15	26	40	6	4.5	7	3	1	¥ 4,000*
M6 × 0.75	P2	SPQ6.0JL10	2.5P	100	15	26	40	6	4.5	7	3	1	¥ 3,240*
M8 × 1.25	P2	SPQ8.0NL10	2.5P	100	19	-	50	6.2	5	8	3	2	¥ 2,930
M8 × 1.25	P2	SPQ8.0NL12	2.5P	120	19	-	50	6.2	5	8	3	2	¥ 3,630*
M8 × 1.25	P2	SPQ8.0NL15	2.5P	150	19	-	50	6.2	5	8	3	2	¥ 5,000
M8 × 1.25	P2	SPQ8.0NL20	2.5P	200	19	-	50	6.2	5	8	3	2	¥ 7,400*
M8 × 1.25	P3	SPR8.0NL10	2.5P	100	19	-	50	6.2	5	8	3	2	¥ 2,930*
M8 × 1.25	P3	SPR8.0NL15	2.5P	150	19	-	50	6.2	5	8	3	2	¥ 5,000*
M8 × 1	P2	SPQ8.0ML10	2.5P	100	19	-	50	6.2	5	8	3	2	¥ 3,150*
M8 × 1	P2	SPQ8.0ML12	2.5P	120	19	-	50	6.2	5	8	3	2	¥ 4,090*
M8 × 1	P2	SPQ8.0ML15	2.5P	150	19	-	50	6.2	5	8	3	2	¥ 5,220*
M8 × 0.75	P2	SPQ8.0JL10	2.5P	100	19	-	50	6.2	5	8	3	2	¥ 3,150*
M10 × 1.5	P2	SPQ10.0L10	2.5P	100	23	-	50	7	5.5	8	3	2	¥ 3,560
M10 × 1.5	P2	SPQ10.0L12	2.5P	120	23	-	50	7	5.5	8	3	2	¥ 4,220*
M10 × 1.5	P2	SPQ10.0L15	2.5P	150	23	-	50	7	5.5	8	3	2	¥ 5,810
M10 × 1.5	P2	SPQ10.0L20	2.5P	200	23	-	50	7	5.5	8	3	2	¥ 8,080*
M10 × 1.5	P3	SPR10.0L10	2.5P	100	23	-	50	7	5.5	8	3	2	¥ 3,560*
M10 × 1.5	P3	SPR10.0L15	2.5P	150	23	-	50	7	5.5	8	3	2	¥ 5,810*
M10 × 1.25	P2	SPQ10.0NL10	2.5P	100	23	-	50	7	5.5	8	3	2	¥ 3,560
M10 × 1.25	P2	SPQ10.0NL12	2.5P	120	23	-	50	7	5.5	8	3	2	¥ 4,220*
M10 × 1.25	P2	SPQ10.0NL15	2.5P	150	23	-	50	7	5.5	8	3	2	¥ 5,810
M10 × 1.25	P2	SPQ10.0NL20	2.5P	200	23	-	50	7	5.5	8	3	2	¥ 8,080*
M10 × 1	P2	SPQ10.0ML10	2.5P	100	23	-	50	7	5.5	8	3	2	¥ 3,850*
M10 × 1	P2	SPQ10.0ML12	2.5P	120	23	-	50	7	5.5	8	3	2	¥ 4,420*
M10 × 1	P2	SPQ10.0ML15	2.5P	150	23	-	50	7	5.5	8	3	2	¥ 6,560*
M10 × 0.75	P2	SPQ10.0JL10	2.5P	100	23	-	50	7	5.5	8	3	2	¥ 8,150*
M12 × 1.75	P2	SPQ12.0PL10	2.5P	100	26	-	50	8.5	6.5	9	3	2	¥ 4,360*
M12 × 1.75	P2	SPQ12.0PL12	2.5P	120	26	-	50	8.5	6.5	9	3	2	¥ 5,060*
M12 × 1.75	P2	SPQ12.0PL15	2.5P	150	26	-	50	8.5	6.5	9	3	2	¥ 7,280
M12 × 1.75	P2	SPQ12.0PL20	2.5P	200	26	-	50	8.5	6.5	9	3	2	¥ 10,100
M12 × 1.75	P3	SPR12.0PL15	2.5P	150	26	-	50	8.5	6.5	9	3	2	¥ 7,280*
M12 × 1.5	P2	SPQ12.0L10	2.5P	100	26	-	50	8.5	6.5	9	3	2	¥ 4,360*
M12 × 1.5	P2	SPQ12.0L12	2.5P	120	26	-	50	8.5	6.5	9	3	2	¥ 5,060*
M12 × 1.5	P2	SPQ12.0L15	2.5P	150	26	-	50	8.5	6.5	9	3	2	¥ 7,280*
M12 × 1.5	P2	SPQ12.0L20	2.5P	200	26	-	50	8.5	6.5	9	3	2	¥ 10,100*
M12 × 1.25	P2	SPQ12.0NL10	2.5P	100	26	-	50	8.5	6.5	9	3	2	¥ 4,360*
M12 × 1.25	P2	SPQ12.0NL12	2.5P	120	26	-	50	8.5	6.5	9	3	2	¥ 5,060*
M12 × 1.25	P2	SPQ12.0NL15	2.5P	150	26	-	50	8.5	6.5	9	3	2	¥ 7,280*
M12 × 1.25	P2	SPQ12.0NL20	2.5P	200	26	-	50	8.5	6.5	9	3	2	¥ 10,100*
M12 × 1	P2	SPQ12.0ML10	2.5P	100	26	-	50	8.5	6.5	9	3	2	¥ 5,300*
M12 × 1	P2	SPQ12.0ML12	2.5P	120	26	-	50	8.5	6.5	9	3	2	¥ 5,980*
M12 × 1	P2	SPQ12.0ML15	2.5P	150	26	-	50	8.5	6.5	9	3	2	¥ 9,010*
M14 × 2	P2	SPQ14.0QL12	2.5P	120	26	-	60	10.5	8	11	3	2	¥ 6,670*
M14 × 2	P2	SPQ14.0QL15	2.5P	150	26	-	6						

Overall length	Thread length	Tread + Neck length	Shank length	Shank dia.	Size of square	Length of square
L	ℓ	ℓn	ℓs	Ds	K	ℓk

LS-SP Long Shank Spiral Fluted Taps

Size	Class	Code	Chamfer	L (mm)	ℓ (mm)	ℓn (mm)	ℓs (mm)	Ds (mm)	K (mm)	ℓk (mm)	No. of flutes	TYPE	MSRP
M14 × 1.5	P2	SPQ0140L12	2.5P	120	26	-	60	10.5	8	11	3	2	¥ 6,670*
M14 × 1.5	P2	SPQ0140L15	2.5P	150	26	-	60	10.5	8	11	3	2	¥ 9,120
M14 × 1.5	P2	SPQ0140L20	2.5P	200	26	-	60	10.5	8	11	3	2	¥ 12,200*
M16 × 2	P2	SPQ0160L15	2.5P	150	26	-	60	12.5	10	13	3	2	¥ 9,900
M16 × 2	P2	SPQ0160L20	2.5P	200	26	-	60	12.5	10	13	3	2	¥ 13,000
M16 × 2	P2	SPQ0160L25	2.5P	250	26	-	60	12.5	10	13	3	2	¥ 16,200*
M16 × 1.5	P2	SPQ0160L15	2.5P	150	26	-	60	12.5	10	13	3	2	¥ 9,900
M16 × 1.5	P2	SPQ0160L20	2.5P	200	26	-	60	12.5	10	13	3	2	¥ 13,000*
M18 × 2.5	P3	SPR018RL15	2.5P	150	33	-	70	14	11	14	4	2	¥ 13,500
M18 × 2.5	P3	SPR018RL20	2.5P	200	33	-	70	14	11	14	4	2	¥ 17,000*
M18 × 2.5	P3	SPR018RL25	2.5P	250	33	-	70	14	11	14	4	2	¥ 20,800*
M18 × 2	P3	SPR018QL20	2.5P	200	33	-	70	14	11	14	4	2	¥ 17,000*
M18 × 1.5	P2	SPQ0180L15	2.5P	150	33	-	70	14	11	14	4	2	¥ 13,500
M18 × 1.5	P2	SPQ0180L20	2.5P	200	33	-	70	14	11	14	4	2	¥ 17,000*
M20 × 2.5	P3	SPR020RL15	2.5P	150	33	-	70	15	12	15	4	3	¥ 17,300
M20 × 2.5	P3	SPR020RL20	2.5P	200	33	-	70	15	12	15	4	3	¥ 21,600
M20 × 2.5	P3	SPR020RL25	2.5P	250	33	-	70	15	12	15	4	3	¥ 27,500*
M20 × 2	P3	SPR020QL20	2.5P	200	33	-	70	15	12	15	4	3	¥ 21,600*
M20 × 1.5	P3	SPR020OL15	2.5P	150	33	-	70	15	12	15	4	3	¥ 17,300
M20 × 1.5	P3	SPR020OL20	2.5P	200	33	-	70	15	12	15	4	3	¥ 21,600*
M22 × 2.5	P3	SPR022RL15	2.5P	150	33	-	70	17	13	16	4	3	¥ 19,300*
M22 × 2.5	P3	SPR022RL20	2.5P	200	33	-	70	17	13	16	4	3	¥ 24,000*
M22 × 2.5	P3	SPR022RL25	2.5P	250	33	-	70	17	13	16	4	3	¥ 29,600*
M22 × 2	P3	SPR022QL20	2.5P	200	33	-	70	17	13	16	4	3	¥ 24,000*
M22 × 1.5	P3	SPR022OL15	2.5P	150	33	-	70	17	13	16	4	3	¥ 19,300
M22 × 1.5	P3	SPR022OL20	2.5P	200	33	-	70	17	13	16	4	3	¥ 24,000*
M24 × 3	P3	SPR024SL15	2.5P	150	39	-	80	19	15	18	4	3	¥ 22,500
M24 × 3	P3	SPR024SL20	2.5P	200	39	-	80	19	15	18	4	3	¥ 27,000
M24 × 3	P3	SPR024SL25	2.5P	250	39	-	80	19	15	18	4	3	¥ 34,200*
M24 × 2	P3	SPR024QL20	2.5P	200	39	-	80	19	15	18	4	3	¥ 27,000*
M24 × 1.5	P3	SPR024OL15	2.5P	150	39	-	80	19	15	18	4	3	¥ 22,500
M24 × 1.5	P3	SPR024OL20	2.5P	200	39	-	80	19	15	18	4	3	¥ 27,000*
M27 × 3	P3	SPR027SL20	2.5P	200	39	-	80	20	15	18	4	3	¥ 30,500*
M27 × 3	P3	SPR027SL25	2.5P	250	39	-	80	20	15	18	4	3	¥ 39,600*
M27 × 2	P3	SPR027QL20	2.5P	200	39	-	80	20	15	18	4	3	¥ 30,500*
M27 × 2	P3	SPR027QL25	2.5P	250	39	-	80	20	15	18	4	3	¥ 39,600*
M27 × 1.5	P3	SPR027OL20	2.5P	200	39	-	80	20	15	18	4	3	¥ 30,500*
M27 × 1.5	P3	SPR027OL25	2.5P	250	39	-	80	20	15	18	4	3	¥ 39,600*
M30 × 3.5	P4	SPS030TL20	2.5P	200	46	-	80	23	17	20	4	3	¥ 39,200*
M30 × 3.5	P4	SPS030TL25	2.5P	250	46	-	80	23	17	20	4	3	¥ 49,800*
M30 × 3.5	P4	SPS030TL30	2.5P	300	46	-	80	23	17	20	4	3	¥ 57,200*
M30 × 3	P3	SPR030SL25	2.5P	250	46	-	80	23	17	20	4	3	¥ 49,800*
M30 × 2	P3	SPR030QL20	2.5P	200	46	-	80	23	17	20	4	3	¥ 39,200*
M30 × 2	P3	SPR030QL25	2.5P	250	46	-	80	23	17	20	4	3	¥ 49,800*
M30 × 1.5	P3	SPR030OL20	2.5P	200	46	-	80	23	17	20	4	3	¥ 39,200*
M30 × 1.5	P3	SPR030OL25	2.5P	250	46	-	80	23	17	20	4	3	¥ 49,800*
M30 × 1.5	P3	SPR030OL30	2.5P	300	46	-	80	23	17	20	4	3	¥ 57,200*

1

JIS

Spiral Fluted Taps
(for blind hole)

Spiral Fluted Taps
(for through hole)

Spiral Fluted Taps
(for through hole)

Spiral Pointed Taps
(for through hole)

Hand Taps

Cemented Carbide Taps

Roll Taps

Special Thread Taps
Single Inspection Tools

Pipe Taps

Thread Mills

Dies

Center Drills
Centering Tools

1

JIS

Spiral Fluted Taps
(for blind hole)

Spiral Fluted Taps
(for through hole)

Spiral Fluted Taps
(for through hole)

Spiral Pointed Taps
(for through hole)

Hand Taps

Cemented Carbide Taps

Roll Taps

Special Thread Taps
Single Inspection Tools

Pipe Taps

Thread Mills

Dies

Center Drills
Centering Tools

Spiral Fluted Tap Series for blind hole

Overall length	Thread length	Tread + Neck length	Shank length	Shank dia.	Size of square	Length of square
L	ℓ	ℓn	ℓs	Ds	K	ℓk

LS-SP Long Shank Spiral Fluted Taps

Size	Class	Code	Chamfer	L (mm)	ℓ (mm)	ℓn (mm)	ℓs (mm)	Ds (mm)	K (mm)	ℓk (mm)	No. of flutes	TYPE	MSRP
For Unified Threads													
1/4-20UNC	P2	SPQU04NL10	2.5P	100	15	26	40	6	4.5	7	3	1	¥ 2,450*
1/4-20UNC	P2	SPQU04NL15	2.5P	150	15	26	40	6	4.5	7	3	1	¥ 3,970*
1/4-28UNF	P2	SPQU04KL10	2.5P	100	15	26	40	6	4.5	7	3	1	¥ 2,450*
1/4-28UNF	P2	SPQU04KL15	2.5P	150	15	26	40	6	4.5	7	3	1	¥ 3,970*
5/16-18UNC	P2	SPQU050L10	2.5P	100	19	-	50	6.2	5	8	3	2	¥ 2,980*
5/16-18UNC	P2	SPQU050L15	2.5P	150	19	-	50	6.2	5	8	3	2	¥ 4,980*
5/16-24UNF	P2	SPQU05ML10	2.5P	100	19	-	50	6.2	5	8	3	2	¥ 2,980*
5/16-24UNF	P2	SPQU05ML15	2.5P	150	19	-	50	6.2	5	8	3	2	¥ 4,980*
3/8-16UNC	P2	SPQU06PL10	2.5P	100	23	-	50	7	5.5	8	3	2	¥ 3,630*
3/8-16UNC	P2	SPQU06PL15	2.5P	150	23	-	50	7	5.5	8	3	2	¥ 5,900*
3/8-16UNC	P2	SPQU06PL20	2.5P	200	23	-	50	7	5.5	8	3	2	¥ 8,550*
3/8-24UNF	P2	SPQU06ML10	2.5P	100	23	-	50	7	5.5	8	3	2	¥ 3,630*
3/8-24UNF	P2	SPQU06ML15	2.5P	150	23	-	50	7	5.5	8	3	2	¥ 5,900*
3/8-24UNF	P2	SPQU06ML20	2.5P	200	23	-	50	7	5.5	8	3	2	¥ 8,550*
7/16-14UNC	P3	SPRU07QL15	2.5P	150	26	-	50	8.5	6.5	9	3	2	¥ 6,990*
7/16-20UNF	P2	SPQU07NL15	2.5P	150	26	-	50	8.5	6.5	9	3	2	¥ 6,990*
1/2-13UNC	P3	SPRU08RL15	2.5P	150	26	-	60	10.5	8	11	3	2	¥ 7,400*
1/2-13UNC	P3	SPRU08RL20	2.5P	200	26	-	60	10.5	8	11	3	2	¥ 10,500*
1/2-20UNF	P2	SPQU08NL15	2.5P	150	26	-	60	10.5	8	11	3	2	¥ 7,400*
1/2-20UNF	P2	SPQU08NL20	2.5P	200	26	-	60	10.5	8	11	3	2	¥ 10,500*
5/8-11UNC	P3	SPRU10UL15	2.5P	150	26	-	60	12.5	10	13	3	2	¥ 10,100*
5/8-11UNC	P3	SPRU10UL20	2.5P	200	26	-	60	12.5	10	13	3	2	¥ 13,200*
5/8-18UNF	P2	SPQU100L15	2.5P	150	26	-	60	12.5	10	13	3	2	¥ 10,100*
5/8-18UNF	P2	SPQU100L20	2.5P	200	26	-	60	12.5	10	13	3	2	¥ 13,200*
3/4-10UNC	P3	SPRU12VL15	2.5P	150	33	-	70	15	12	15	4	3	¥ 17,600*
3/4-10UNC	P3	SPRU12VL20	2.5P	200	33	-	70	15	12	15	4	3	¥ 22,500*
3/4-16UNF	P3	SPRU12PL15	2.5P	150	33	-	70	15	12	15	4	3	¥ 17,600*
3/4-16UNF	P3	SPRU12PL20	2.5P	200	33	-	70	15	12	15	4	3	¥ 22,500*
7/8-9UNC	P3	SPRU14WL15	2.5P	150	33	-	70	17	13	16	4	3	¥ 19,700*
7/8-9UNC	P3	SPRU14WL20	2.5P	200	33	-	70	17	13	16	4	3	¥ 24,000*
7/8-14UNF	P3	SPRU14QL20	2.5P	200	33	-	70	17	13	16	4	3	¥ 24,000*
1-8UNC	P3	SPRU16XL15	2.5P	150	39	-	80	19	15	18	4	3	¥ 23,300*
1-8UNC	P3	SPRU16XL20	2.5P	200	39	-	80	19	15	18	4	3	¥ 29,000*
1-12UNF	P3	SPRU16SL20	2.5P	200	39	-	80	19	15	18	4	3	¥ 29,000*
For Whitworth Threads													
1/4W20	P2	SPQW04NL10	2.5P	100	15	26	40	6	4.5	7	3	1	¥ 2,450*
1/4W20	P2	SPQW04NL15	2.5P	150	15	26	40	6	4.5	7	3	1	¥ 3,970*
5/16W18	P2	SPQW050L10	2.5P	100	19	-	50	6.2	5	8	3	2	¥ 2,980*
5/16W18	P2	SPQW050L15	2.5P	150	19	-	50	6.2	5	8	3	2	¥ 4,980*
3/8W16	P2	SPQW06PL10	2.5P	100	23	-	50	7	5.5	8	3	2	¥ 3,630*
3/8W16	P2	SPQW06PL15	2.5P	150	23	-	50	7	5.5	8	3	2	¥ 5,900*
3/8W16	P2	SPQW06PL20	2.5P	200	23	-	50	7	5.5				

Overall length	Thread length	Tread + Neck length	Shank length	Shank dia.	Size of square	Length of square
L	ℓ	ℓn	ℓs	Ds	K	ℓk

LS-SP Long Shank Spiral Fluted Taps

Size	Class	Code	Chamfer	L (mm)	ℓ (mm)	ℓn (mm)	ℓs (mm)	Ds (mm)	K (mm)	ℓk (mm)	No. of flutes	TYPE	MSRP
3/4W10	P3	SPRW12VL15	2.5P	150	33	-	70	15	12	15	4	3	¥ 17,600*
3/4W10	P3	SPRW12VL20	2.5P	200	33	-	70	15	12	15	4	3	¥ 22,500*
7/8W9	P3	SPRW14WL15	2.5P	150	33	-	70	17	13	16	4	3	¥ 19,700*
7/8W9	P3	SPRW14WL20	2.5P	200	33	-	70	17	13	16	4	3	¥ 24,000*
1 W8	P3	SPRW16XL15	2.5P	150	39	-	80	19	15	18	4	3	¥ 23,300*
1 W8	P3	SPRW16XL20	2.5P	200	39	-	80	19	15	18	4	3	¥ 29,000*

1

JIS

Spiral Fluted Taps
(for blind hole)

1

Spiral Fluted Taps
(for through hole)

2

Spiral Pointed Taps
(for through hole)

3

Hand Taps

4

Cemented Carbide Taps

5

Roll Taps

6

Special Thread Taps
Single inspection tools

7

Pipe Taps

8

Thread Mills

9

Dies

10

Center Drills
Centering Tools

11

* = Specified Distribution Items, Made to order products.
For improvement, spec may change without advance notice.